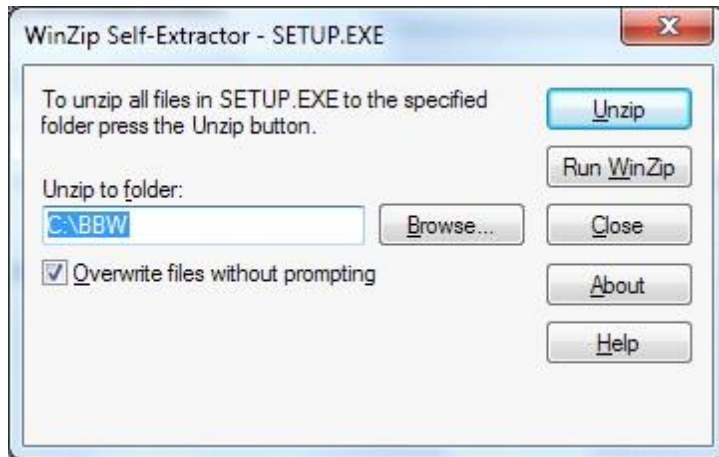


How do I install the ballparks from the CDs or diskettes?

Reply: If you are running Vista or Windows 7 then...

When this window comes up...

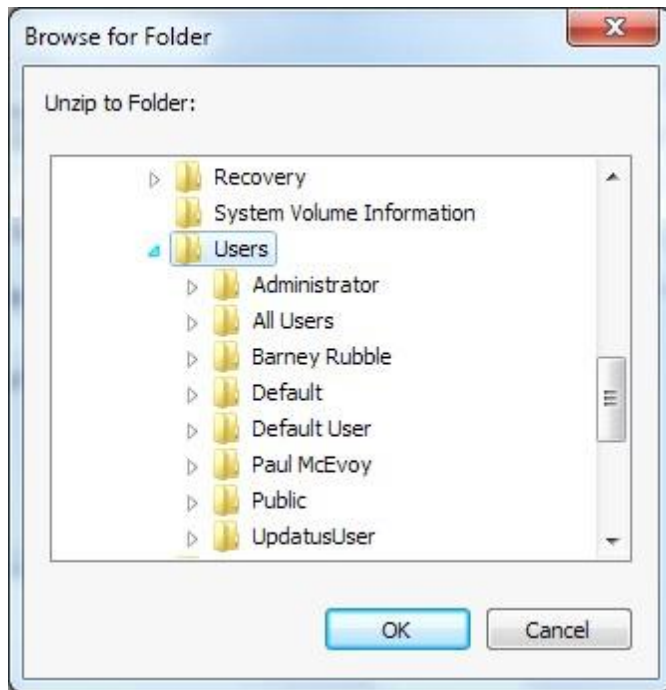


Click on the Browse button.

Then when this one comes up...



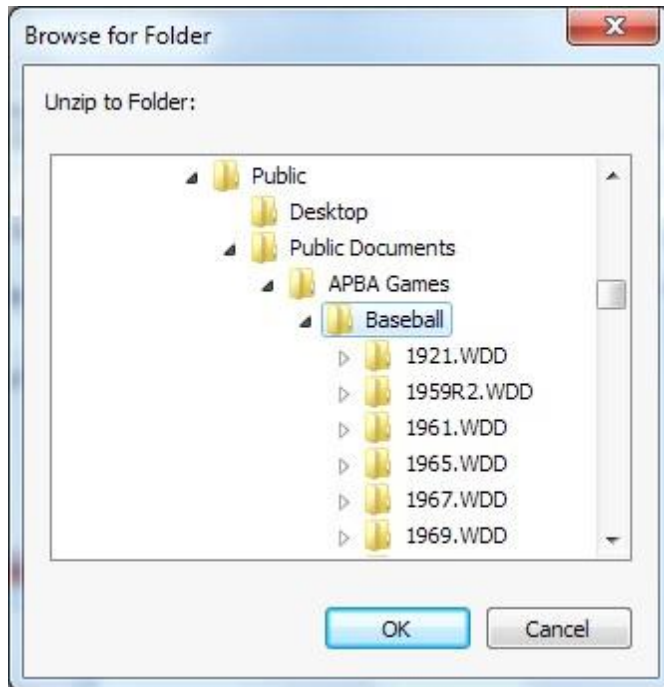
Click on the ">" arrow to the left of "Local Disk (C:)."
Then scroll down to "Users."



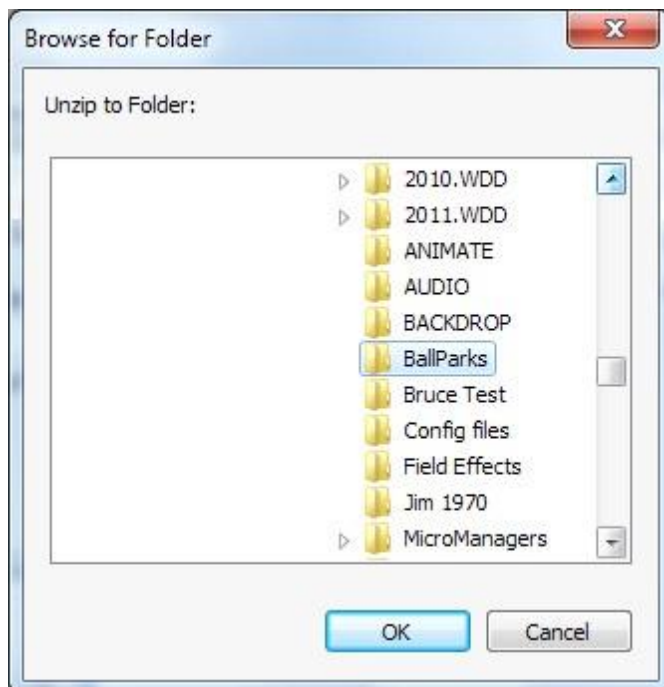
Then down to Public, Public Documents and then to APBA Games...



...then to Baseball....



...and then finally to Ballparks.



Then click "OK."