

APBA Baseball Version 5.75

User's Guide

2024 Edition



APBA Games
816 Curie Drive
Alpharetta, GA 30005

<http://www.apbagames.com/>

Program based on APBA Baseball Master Game, © 1987-2023 APBA Games

Version 5.75 program development by StumpCat Software

Version 5.75 User's Guide written by Bruce Jones

Revised Eighth Edition, December 2023 © 2012-2023 APBA Games

Previous editions were published as Installation and Upgrade Guide and Setup Guide

Microsoft and Windows are registered trademarks of Microsoft Corporation

Contents

- Introduction..... 4
- What's New in APBA Baseball Version 5.75 5
- Additional Items Included on the Version 5.75 Install CD 5
- Installation of APBA Baseball Version 5.75..... 6
 - System Requirements..... 6
 - Windows Versions Supported 6
 - Upgrading from a Previous Version of APBA Baseball..... 6
 - APBA Baseball Products on Zip Files 7
 - Using the Installation Setup Wizard 9
- Updates to APBA Baseball Version 5.75 16
 - Program Updates..... 16
 - Play-By-Play Updates 16
 - Installing Updates 16
- Installing Season Data Disks, Managers, and Ballparks 18
 - Season Data Disks 18
 - Installing Data Disks from Zip Files 21
 - Ballparks..... 23
 - Micromanagers 25
- Technical Support..... 27
 - Contact information for APBA 27

Introduction

Welcome to APBA Baseball Version 5.75!

This User's Guide describes the installation and setup procedures for Version 5.75, whether you are upgrading from a previous version, or installing the program for the first time. It also contains information about adding new seasons, ballparks, and micromanagers to the game installation.

Version 5.75 is the first version of APBA Baseball that can be installed and played on 64-bit versions of Microsoft Windows. Version 5.75 runs as a regular Windows desktop application, without the use of additional operating system software or "virtual" environments.

This User's Guide does not contain instructions about how to play APBA Baseball Version 5.75. For complete information on playing APBA Baseball, please refer to the Quick Start Guide that is available at the end of the setup process, and to the detailed Help files and Tutorials that are available from the Help menus within each of the game programs. The "How Do I" option in the Help menu of each program is particularly useful for getting quick answers to questions about the most commonly-used procedures within that program.

Changes in this edition of this document are indicated by a vertical bar at the left side of the text.

What's New in APBA Baseball Version 5.75

Version 5.75 of APBA Baseball includes the four main programs (Broadcast Blast, League Manager, Advanced Draft, and StatMaster), all of which have been revised and updated.

Along with the revisions that were required within the individual programs, numerous improvements have been made. For example, mouse scroll wheels are now supported in all programs, and many right-click popup menus have been added, including the ability to view player card images.

Each of the four main programs has a “What’s New” section in its Help file. Go to Help – What’s New within a program to view a summary of the improvements made within that program.

Additional Items Included on the Version 5.75 Install CD

The current Version 5.75 install media includes the Upgrade 29 versions of all four main programs. (See the section “[Updates to APBA Baseball Version 5.75](#)” for information about program Upgrades.)

The Version 5.75 Setup program installs six Ballparks:

- Chicago North
- Cincinnati 1970
- Detroit 1912
- Forbes Field
- Minnesota 1982
- New York Bronx 1976

Four Micromanagers are also installed:

- Cap Spalding, Jr.
- Duke Robinson, Jr.
- Larry Pepper
- Johnny McCoy

The Install media also contains three Season Data Disks that can be selected for installation during initial setup, or installed at a later time. Seasons included on the current disk are 1986, 2004, and 2015.

Installation of APBA Baseball Version 5.75

System Requirements

In general, APBA Baseball Version 5.75 can be installed and run on any computer system that meets the recommended hardware requirements for Microsoft Windows 10.

Most computers sold since 2010 should meet these standards. Older computers will generally have limited memory and hard drive space, and may contain outdated video hardware that does not support some of the newer graphical features in Baseball Version 5.75, such as View Card pop-up windows.

The 5.75 program, additional Season Disks, and Ballpark disks are available either on CD or as zip files provided via e-mail attachments. If the computer on which the 5.75 program is being installed does not have a CD/DVD drive, the zip file should be purchased instead of the CD.

If large numbers of Season Disks are being installed, particularly if statistics and box scores are being saved, additional hard drive space will be required. For example, a Data Disk containing a single completed league Season, with all box scores saved, can require 200 MB or more of disk space.

Windows Versions Supported

- Windows 10 Home and Pro, in both 64-bit and 32-bit editions
- Windows 11

Previous versions of Windows are no longer being supported by Microsoft, so they are no longer supported for Baseball Version 5.75.

Upgrading from a Previous Version of APBA Baseball

If you are a new user of APBA Baseball, continue reading with the section “Using the Setup Wizard.”

APBA Baseball 5.75 uses different folders for the installation of programs and data files than were used in previous versions of APBA Baseball. This means that an existing older version of the Baseball program will be completely unaffected by the installation of Baseball 5.75. The new and old versions can continue to be used on the same computer, and will contain their own separate libraries of installed Data Disks, Micromanagers, and Ballparks.

This also means that Data Disks will need to be re-installed in Baseball 5.75, while Micromanagers and Ballparks can be copied from the older version. These topics are covered in later sections of this manual.

APBA Baseball Products on Zip Files

Beginning in 2023, many APBA Baseball 5.75 products are available as zip files.

Installation of products from zip files requires different handling from products provided on CDs. The following procedures apply to Baseball product zip files.

These files can be unzipped using the Windows File Explorer, or with other programs (not included with Windows) such as WinZip and 7-Zip.

Many users are already familiar with how to unpack and install the contents of zip files. These instructions are intended to help users who need additional guidance for installing these files.

Windows File Blocking

Windows 10/11 Attachment Manager automatically marks many files received over the Internet as Blocked.

If a Blocked zip file is unzipped, the file properties of the contents will be modified. The original date and time for all of the files contained in the zip file will be changed to the current date and time. This will make it difficult in the future to determine if you have the most recent version of a file installed.

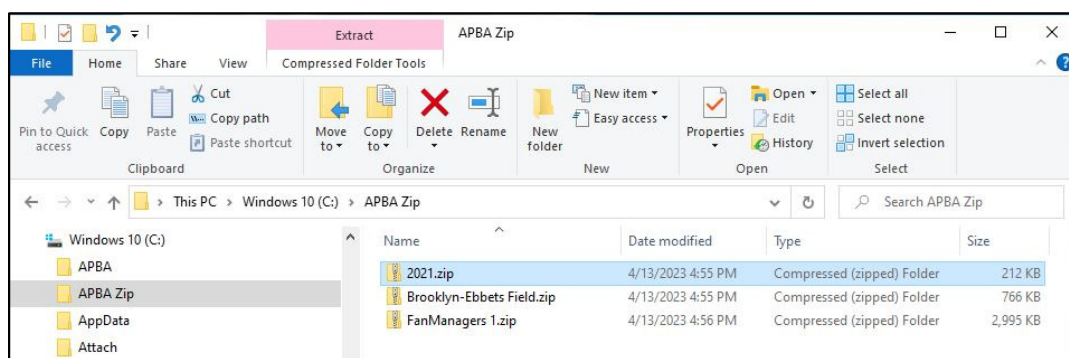
Fortunately, the process of Unblocking a file is simple and is described in the following section.

Unblocking zip files

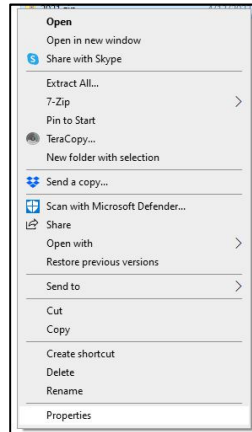
The steps below demonstrate how to Unblock a zipped disk file using Windows 10 File Explorer.

In this example, the file being Unblocked is a season file named “2021.zip.”

1. Download the zip file to a folder on your computer. Remember where you saved it! Any location should work, but a good location to use would be a dedicated folder for APBA zip files, such as “C:\APBA Zip.”

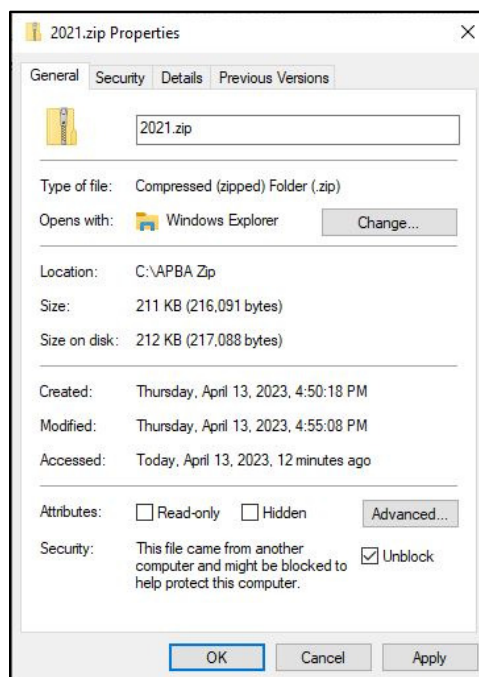


2. Right-click on the downloaded zip file and select “Properties” (it will be at the bottom of the menu).



3. In the “Security” section at the bottom of the “Properties” window, click the “Unblock” checkbox, then click the “Apply” button, followed by the “OK” button.

If you do not see a Security section and Unblock checkbox, your computer did not Block the zip file, and you can simply click the “OK” button.



4. Installation instructions for each different type of product – Season Data Disks, Ballparks, and Fan Managers – are described in the following sections.

Using the Installation Setup Wizard

The screen images in this section were taken from the installation of Version 5.75 on Windows 10.

1. Insert the APBA Baseball 5.75 CD into a CD/DVD drive.

If you have purchased the zip file version of the program, unzip the file to whatever folder location you choose, open the folder, and double-click Setup.exe.

If you are installing the program from an external USB drive that contains the 5.75 CD installation files, insert or connect that drive. Depending on your Windows version and AutoPlay settings, a popup window with one or more actions that can be performed may open. If so, select the option to run Setup.exe. If that option is not displayed, then open Windows Explorer, browse to your CD drive or USB drive, and double-click Setup.exe.

If you are prompted by Windows User Account Control or your anti-virus program to confirm that you want to run Setup.exe, click the “Yes” or “OK” button on the confirmation window.

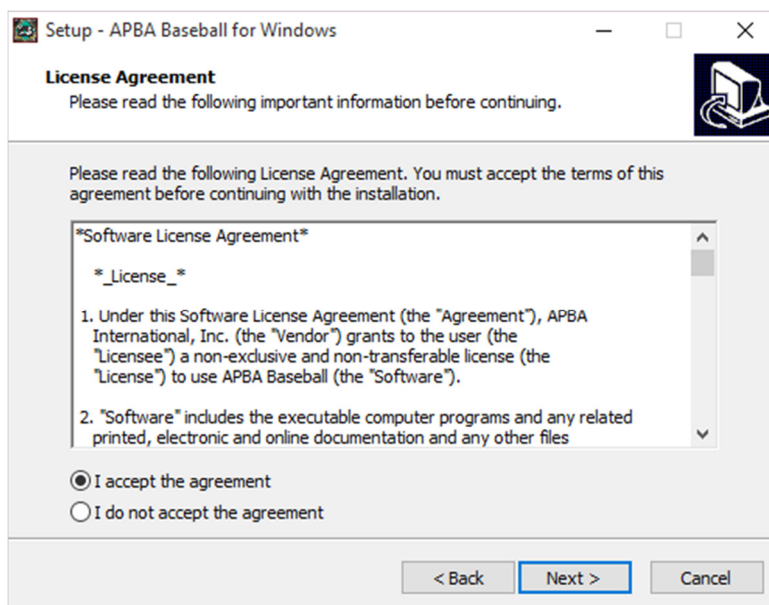
2. The Setup Wizard will open.

You can open an on-screen copy of the Install Guide by clicking the “View the Install Guide” button, or you can click the “Next” button to continue.

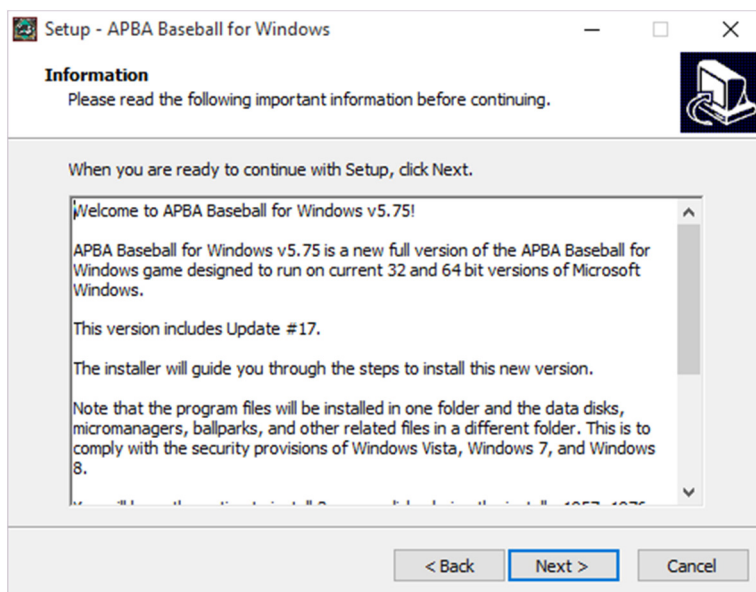
On any screen in Setup, you can click the “Back” button to return to the previous screen, or the “Cancel” button to cancel Setup.



3. The License Agreement screen will appear. Please review the License Agreement before continuing. When you are finished, click the radio button next to “I accept the agreement” and click the “Next” button to continue.

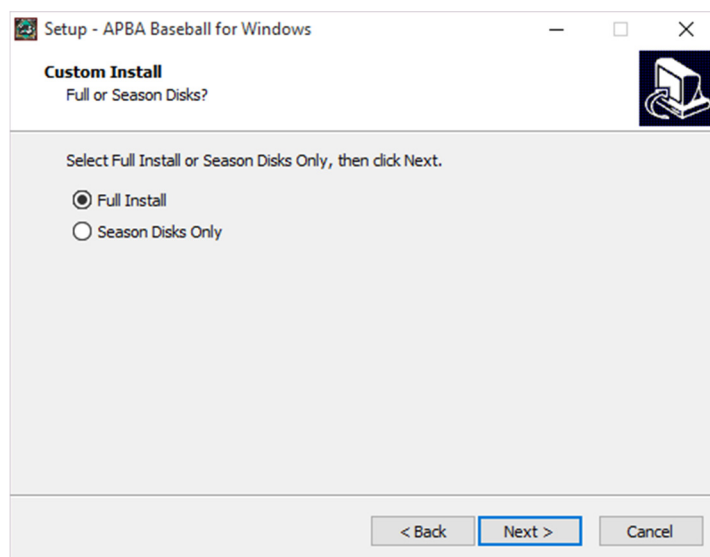


4. The Information screen will be displayed. Read the important information in this window before continuing. When you are finished, click the “Next” button to continue.



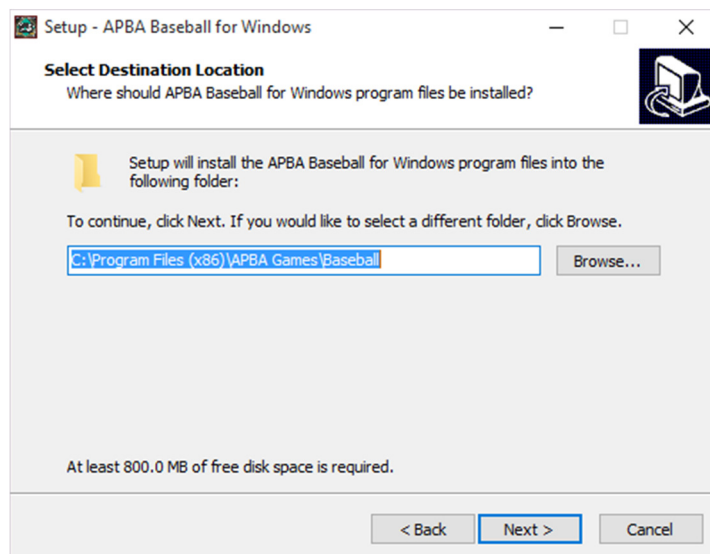
5. This step does not apply to the initial installation of Version 5.75. This screen will only appear if you execute Setup again on a computer on which 5.75 has already been installed. The first-time installation instructions continue with Step 6.

The Custom Install screen will allow you to choose whether to do a Full Install of all programs and data files, or to install the three included Season Disks Only. This allows you to return to Setup and install the Season Disks later if you chose not to install them during the initial installation. Please note that you will be given a chance on a later screen to decide which of the three Season Disks, if any, that you would like to install. After you select one of the two options, click the “Next” button to continue.



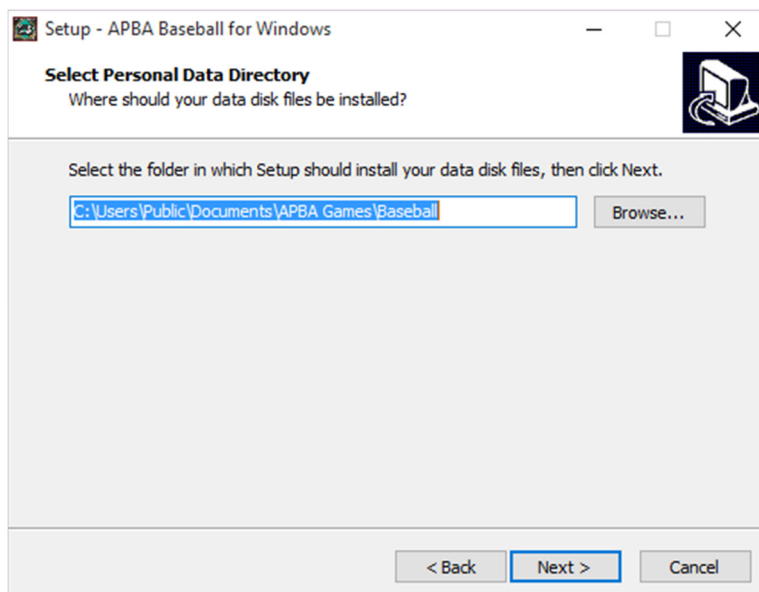
6. The default program file location is displayed.

Although you are given the ability to select a different folder for installation, it is **strongly recommended** that you use the default folder location. Click the “Next” button to continue.

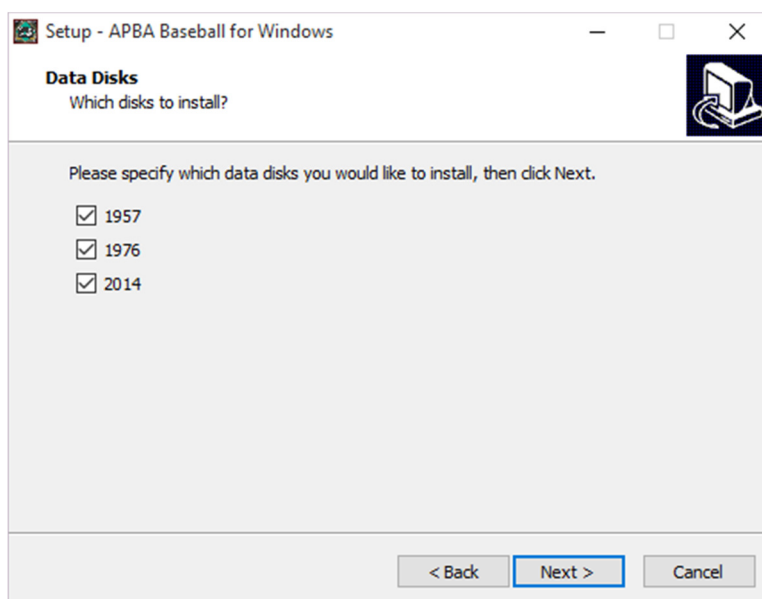


7. The Select Personal Data Directory screen appears.

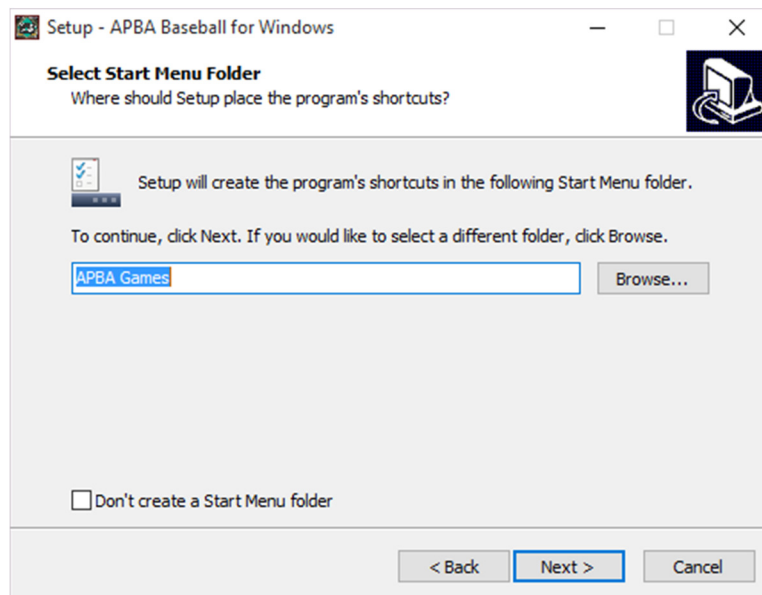
Again, although you are given the ability to select a different folder for data, it is **strongly recommended** that you use the default folder location. Click the “Next” button to continue.



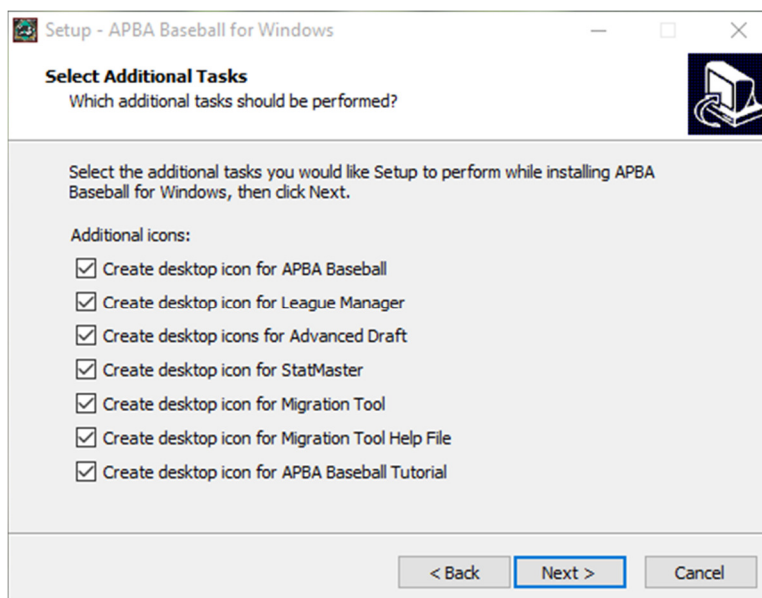
8. The Data Disks screen is displayed. This is where you are able to select which of the three included Season Data Disks you wish to install at this time. Click the check box next to each Season that you wish to install. You can run Setup again later and install any Seasons that you do not choose to install now. When you have finished selecting the Seasons to install, click the “Next” button to continue.



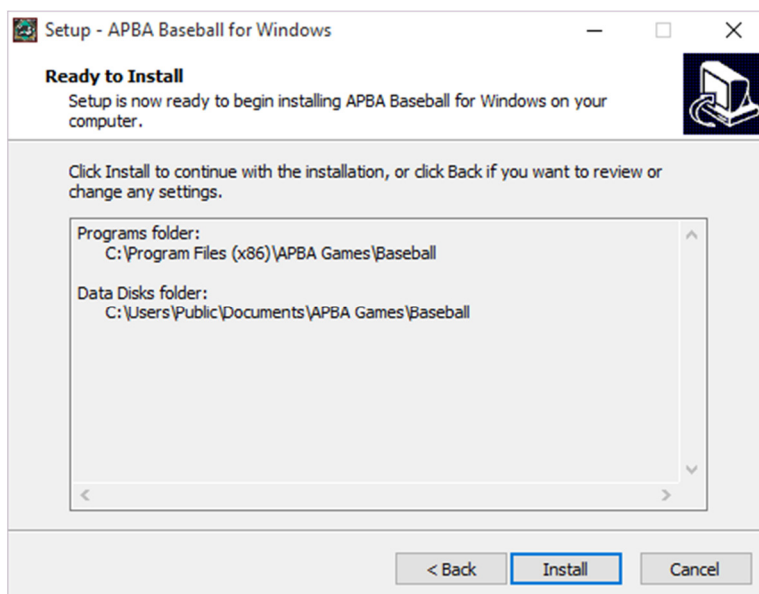
9. The Select Start Menu Folder screen allows you to select the folder in the Start Menu that will contain the 5.75 program icons. You can also select not to create a folder in the Start Menu by clicking the check box at the bottom of the screen. Most users should accept the default folder name of “APBA Games” and click the “Next” button to continue.



10. The Select Additional Tasks screen allows you to choose whether or not to create icons for the 5.75 programs and documentation on your Windows Desktop. These are entirely optional – you are not required to use them. Select whichever icons you wish to have Setup create for you. When you are finished making your selections, click the “Next” button to continue.

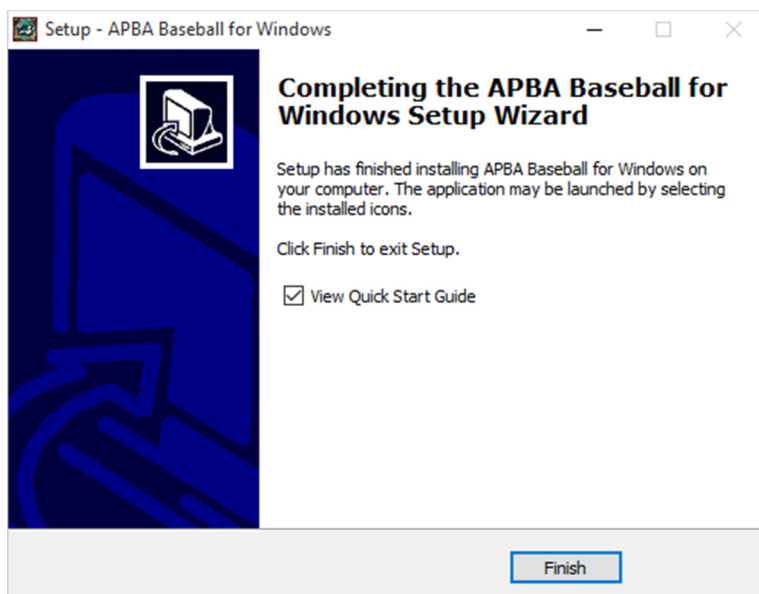


11. The Ready to Install screen will display the folder selections that were made on previous screens. If these are correct, click the “Install” button. Otherwise, click the “Back” button and continue back until you reach the screen with the information that you wish to change.



12. The Installing screen will appear and display a progress bar as it extracts the files, copies them to your computer, and configures the programs. This may take several minutes, depending on the speed of your computer and your hard drive.
13. When the installation is finished, the Completing the Setup Wizard screen will be displayed. You have the option of selecting to view the Quick Start Guide after the Setup Wizard has closed. The Quick Start Guide is a useful overview of the program's functions, and should be viewed by all new users.

Click the “Finish” button to close the Setup Wizard and complete the installation.



14. Once the program installation has completed, follow the instructions in the next section of this Guide, “Updates to APBA Baseball 5.75,” to check for, obtain, and install the most recent program Upgrades for Baseball 5.75.

As previously noted, this version of the 5.75 Install media already includes Update #29, so that Update does not need to be reinstalled.

15. Congratulations! You’re ready to play APBA Baseball 5.75.

Depending on the selections that you made during Setup, you can start the individual 5.75 programs through the Start Menu, or by using icons on the Windows Desktop.

If you chose to install one or more Data Disks in Step 8, the most recent Season that was installed will be set as the initial default Data Disk. In addition, all of the Data Disks that were chosen for installation will be pre-set with ready-to-play replay organizations. Please note that only the three Data Disks on the installation CD contain these pre-set organizations. Data Disks installed from official APBA Season Disks will NOT contain any ready-to-play organizations.

You can now install additional Season Data Disks, Ballparks, and Managers, using the instructions given on those disks and in the “Installing Data Disks, Managers, and Ballparks” section of this Guide.

Updates to APBA Baseball Version 5.75

Program Updates

Updates for Baseball 5.75 (also known as Upgrades) will be made available periodically on the Baseball 5.75 page at <http://apbagames.com/apbabaseball/baseball-5-75>. These Upgrades will contain software patches for issues that have been reported to APBA by game owners, and may also include functional enhancements for the individual programs within Baseball 5.75.

Upgrades are cumulative, so all of the features and patches that were included in previous Upgrades will be contained in the most recent Upgrade. This means that a new install (or re-install) of Baseball 5.75 can be updated to the current level simply by installing the most recent Upgrade.

Upgrades will normally provide complete replacements for all of the individual programs, and may also include new or revised documentation. An Update Information document that describes the changes included within the Upgrade will also be made available on the Baseball 5.75 web page.

As of December 2023, the current update version is Upgrade #30.

Play-By-Play Updates

Play-By-Play Updates are also available. These are separate from the game program Upgrades described above. The Play-By-Play Updates correct errors in play results reporting. These updates are also cumulative, so only the most recent one needs to be installed.

As of December 2023, the current Play-By-Play Update is Update #10.

Installing Updates

The typical installation process for a Baseball 5.75 Upgrade or a Play-By-Play Update is as follows:

1. Go to the Baseball 5.75 page at <http://apbagames.com/apbabaseball/baseball-5-75> and click on the link for the current Upgrade. A link to the current Upgrade may also appear in the “What’s New” list on the apbagames.com main page.
2. Depending on the web browser that you used to access the web site, you may be prompted to Save or Run the file. Choose “Save” and select an appropriate location, such as your default Download folder or your Windows Desktop. Remember where you saved the file!
3. The file will be in compressed .zip format, and will have a descriptive filename such as APBA575Update30-Setup.zip or APBA-PBP-Update-10-Setup.zip.

The method used to extract the contents of the zip file will depend on your version of Windows. Windows 8.1 and 10 have the ability to open zip files directly.

4. The zip file will contain an executable program file with a filename such as APBA575Update25 Setup.exe or APBA PBP Update 7 Setup.exe.

Save the extracted .exe file to your Windows Desktop or to your default Download folder. Remember where you saved the file!

5. Double-click the .exe file to start the Update process. If you receive a User Account Control popup window, click the “Yes” button to continue.
6. Most of the screens displayed during the Update install will be the same as the ones that are displayed during the program installation process, as described in the previous section of this Guide. There may be additional new screens that offer a choice of options for a newly-added feature, such as the screen that is displayed for the installation of Field Effects files.

Play-By-Play Updates are shorter and will display fewer screens during installation.

The last screen will include an option that will allow you to display the Update Information document after you exit Setup.

Once you complete the above steps, Baseball 5.75 will be updated to the most recent version.

Installing Season Data Disks, Managers, and Ballparks

APBA Baseball 5.75 stores Season Data Disk, Ballpark, and Micromanager data files in a new folder structure. As a result, the data file locations for these items are different from the folders used in earlier versions of APBA Baseball.

The Install Data Disk functions within Baseball Blast and the other programs will install Season Disks into the proper location. Managers and Ballparks have their own installation methods, which are described below.

If you have previously installed Version 5.5 or earlier, you can manually copy your existing Ballpark and Micromanager files into the proper folders in 5.75 and reinstall your Season Data Disks.

The following sections provide installation information for Data Disks, Micromanagers, and Ballparks.

Season Data Disks

Installing a newer version of a Season Disk

If you are installing an updated version of a season disk that you had previously installed, you may get a yellow “Installed” message when installing the new disk. If this happens, you must rename the folder containing the old version of the season disk in order to make the new version “Installable.”

1. Locate the .WDD folder for the old disk. It will be in the following location:

Version 5.75: C:\Users\Public\Documents\APBA Games\Baseball

Version 5.5 and earlier: C:\BBW (If you installed BBW in a different location, it will be there.)

2. Right-click on the .WDD folder name, select Rename, and change the folder name.

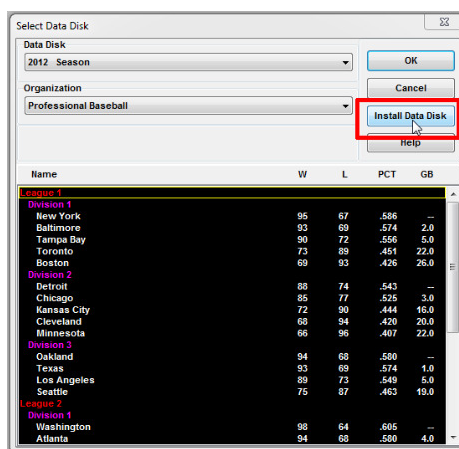
Example: If you are updating the 1957 disk, you could change the old folder to “1957 old.WDD.”

Installing a Season Disk

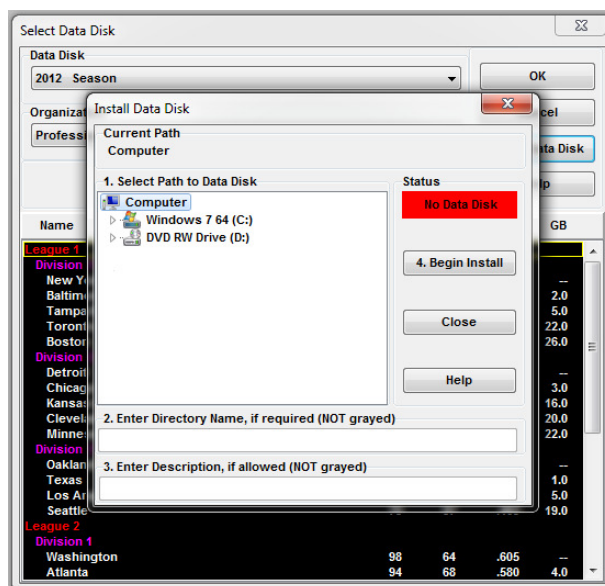
The Install Data Disk process is basically the same as it was in earlier versions of APBA Baseball. Data Disks can be installed from a zip file or a CD, or the files on a CD can be copied to a Windows folder on an internal or external drive, and the Data Disk can be installed from that folder.

The instructions in this section are for installing a Data Disk that was provided on a CD. Instructions for installing from a Data Disk zip file are provided in the next section.

1. Broadcast Blast, Advanced Draft, League Manager, and StatMaster all have the ability to install a new Data Disk. The menu choices used to navigate to the Install Data Disk function are somewhat different in each program:
 - In Broadcast Blast, the menu path is Play Ball – Game (or Play Ball - Series).
 - In Advanced Draft, the menu path is Select – Load Data Disk.
 - In League Manager, the menu path is Select – Load Organization.
 - In StatMaster, the menu path is Select – Open.
2. Any of these will open the Select Data Disk window (except Broadcast Blast, which opens the Select Teams window). On the upper right side of this window, click the “Install Data Disk” button to open the Install Data Disk window.



3. Select the path to the new Data Disk, which can be located on a Season CD or in a folder on any internal or external drive that is attached to your computer.

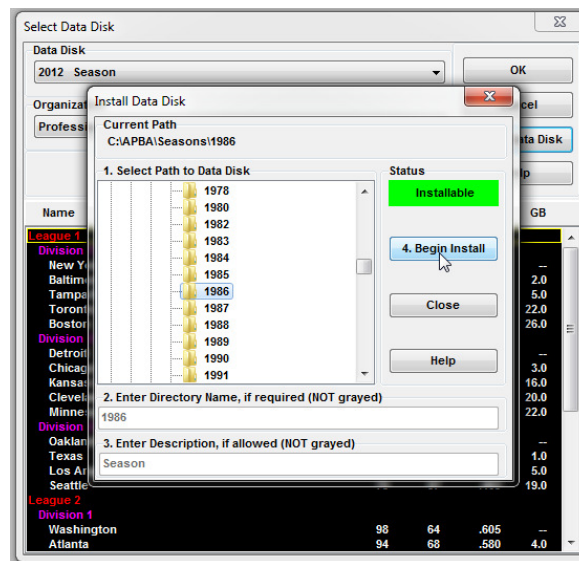


4. If a valid Data Disk is selected, the Status indicator will change from a red “No Data Disk” message to a green “Installable” message. If the Data Disk has already been installed on this computer, the Status indicator will change to a yellow “Installed” message.

If the disk being installed is an official APBA Season Disk, the Directory Name and Description fields will be pre-filled and grayed. If not, you will be able to edit the information in the two fields as you desire.

5. When you are finished entering information, click the “4. Begin Install” button. The Data Disk will be installed in a few seconds, and will now be available to choose in the Select Data Disk screen.

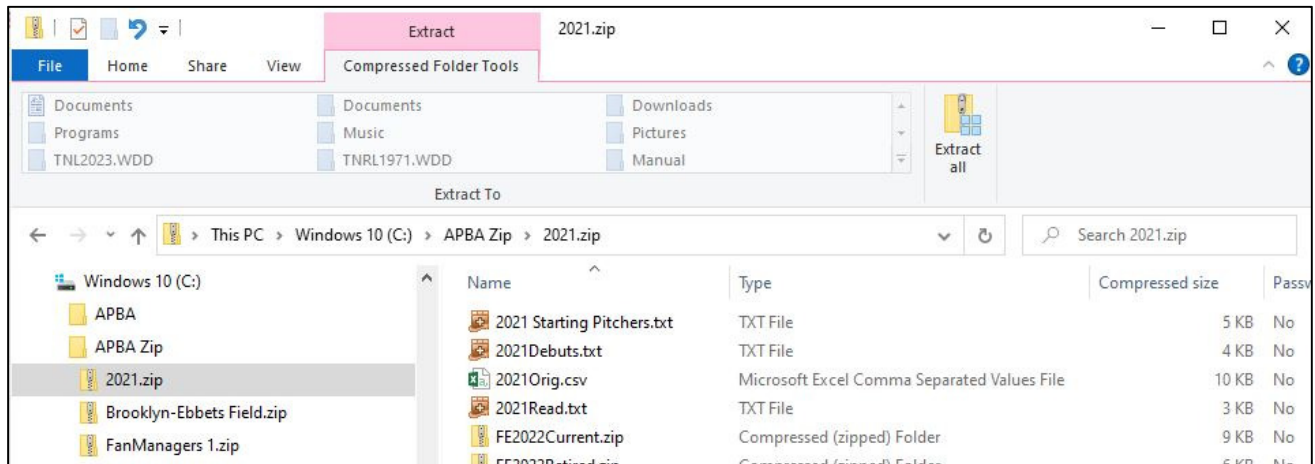
In the example below, the official APBA 1986 Season Disk is being installed from a folder on the C: drive, C:\APBA\Seasons\1986.



Installing Data Disks from Zip Files

In this example, the season zip file being installed is named “2021.zip.” It has already been saved to a folder named “C:\APBA Zip.”

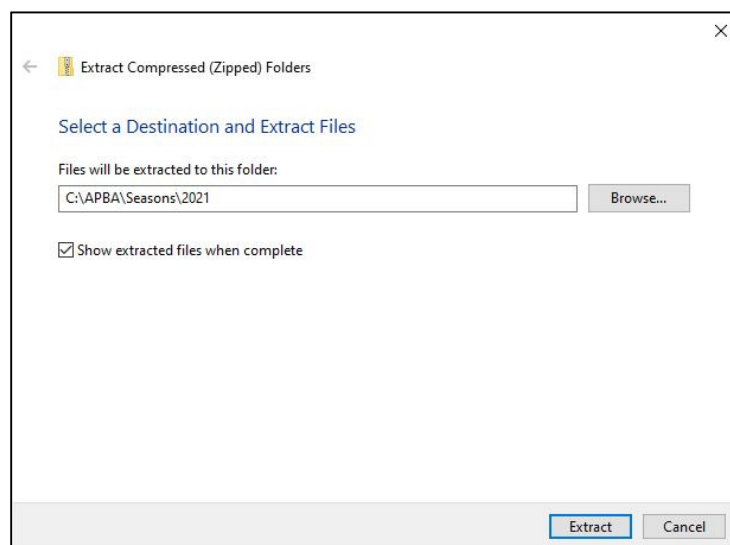
1. Double-click on the season zip file name. This will open the zip file and enable the “Compressed Folder Tools” section in the File Explorer toolbar. Click on the “Extract All” button in the toolbar at the top.



2. Select the destination for the unpacked season files by either typing in the location, or clicking the “Browse” button to search for the desired folder.

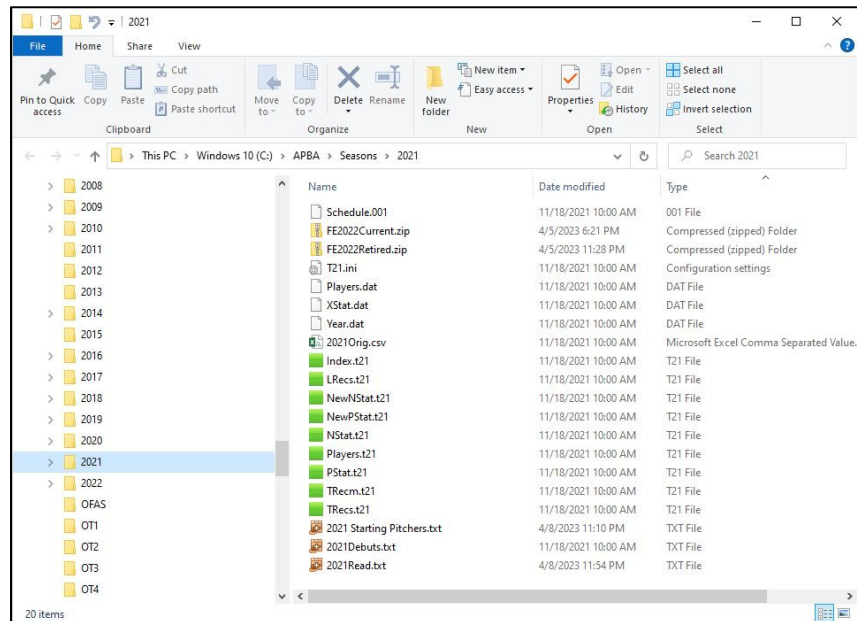
You should create a separate folder for each unzipped season disk. One method would be to create a C:\APBA folder, then a Seasons subfolder, then a subfolder for each season.

In the example below, the file 2021.zip is being extracted to a folder named C:\APBA\Seasons\2021.



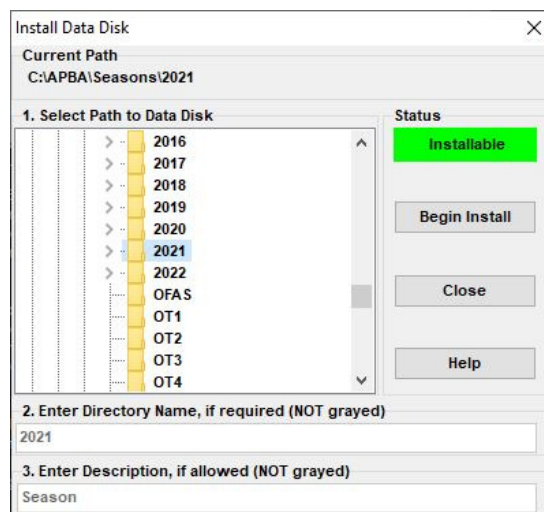
3. Click the “Extract” button. The files will be unpacked to the chosen folder. If the “Show extracted files when complete” box is checked, a new window will open that displays the unzipped files in the folder. The season files are now ready to be installed.

Note that each season disk includes a Read.txt file, with additional information, and a Starting Pitchers.txt file. Some disks also include a Debuts.txt file, Transactions information, and/or alternate schedule files.



4. Open APBA Baseball and select “Play Ball – Game.” In the “Select Teams” window, click the “Install Data Disk” button.

5. Locate the folder containing the unzipped season files in the “Select Path to Data Disk” window and click on the folder name. If that season disk has not already been installed on this computer, the green “Installable” message will appear. Click the “Begin Install” button.



6. The disk is now installed, and will be available to select under “Data Disk.”

Ballparks

Ballparks provided on CD

All Ballparks provided on CD have an installation program (usually named Setup.exe) that is a self-extracting exe file that unpacks the Ballpark files to a folder.

As with Data Disks, the Ballpark can be installed directly from the CD, or the exe file on the CD can be copied to a folder on an internal or external drive, and then run from the folder.

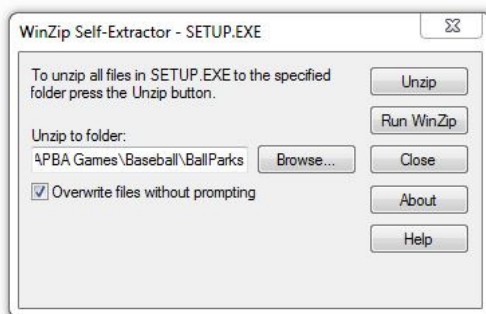
As described above for Managers, you must point to the correct output folder when you are unpacking the Ballpark files.

C:\BBW is NOT the correct install folder for Ballparks in APBA Baseball Version 5.75.

For Windows 10, the default Ballpark folder is:

C:\Users\Public\Documents\APBA Games\Baseball\BallParks

Use the “Browse” button in the WinZip Self-Extractor window to open the “Browse for Folder” window, navigate to the proper folder under as listed above, and click the “Unzip” button to install the Ballpark. Be aware that the “Documents” folder under “Users\Public” is called “Public Documents” in the Windows Explorer folder tree, but it’s the same folder.



Ballpark Installer Utility for diskette-based Ballparks

Ballparks that were originally distributed by APBA on diskettes came with their own Setup.exe or BPSetup.exe program. Unfortunately, those setup programs will not run on 64-bit versions of Windows.

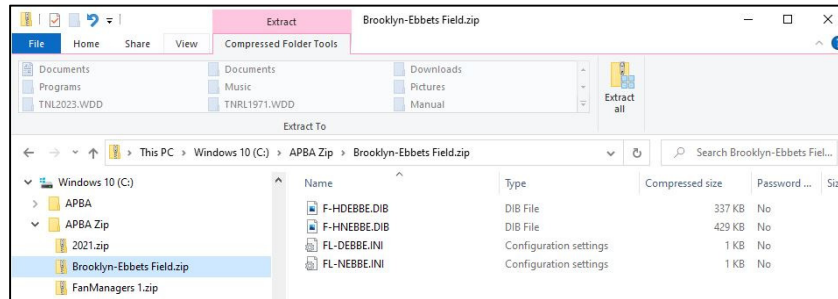
The Ballpark Installer Utility, which can be downloaded from the Baseball 5.75 page at <http://apbagames.com/apbabaseball/baseball-5-75>, resolves that problem. It allows the installation of these Ballparks in Version 5.75, whether they are located on the original diskette, in a hard drive folder, or on removable media, such as a data CD or USB drive.

The Ballpark Installer is easy to use, and comes with simple instructions in the form of a Help file.

Ballparks Distributed as Zip Files

In this example, the ballpark file being installed is named “Brooklyn-Ebbets Field.zip.” It has already been saved to a folder named “C:\APBA Zip.”

1. Double-click on the ballpark zip file name. This will open the zip file and enable the “Compressed Folder Tools” section in the File Explorer toolbar. Click on the “Extract All” button in the toolbar.



2. Select the destination for the ballpark installation either by typing in the location, or by clicking the “Browse” button to search for the correct destination folder.

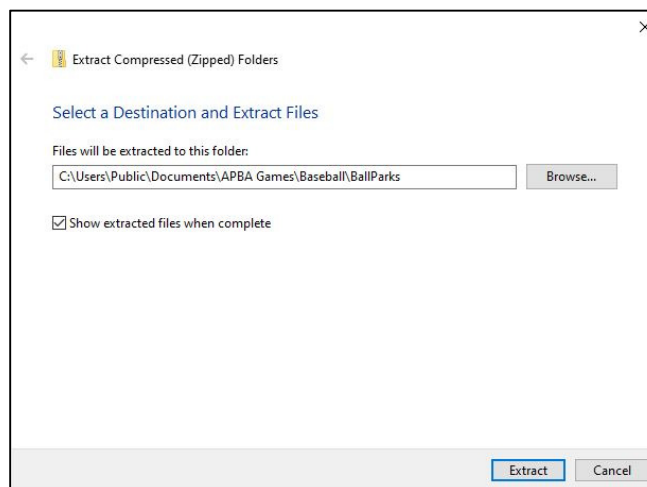
For Baseball 5.75, the correct Ballparks destination folder name is:

C:\Users\Public\Documents\APBA Games\Baseball\BallParks

For BBW 5.5 and earlier, the correct Ballparks destination folder is:

C:\BBW

(This assumes that BBW was installed in the default location. If you installed BBW in a different folder, select that folder.)



3. Click the “Extract” button. The files will be unpacked to the chosen destination folder. If the “Show extracted files when complete” box is checked, a new window will open that displays the contents of the destination folder.

4. The Ballpark is now installed, and it will be available to select in League Manager.

Micromanagers

APBA Baseball Micromanagers are generally provided in one of two formats: a self-extracting exe file, or a compressed zip file. Regardless of which way the Manager is packaged, the key to installing him correctly in Version 5.75 is to point to the correct output folder when you are unpacking the files.

C:\BBW is NOT the correct install folder for Managers in APBA Baseball Version 5.75.

For Windows 10, the default MicroManager folder is:

C:\Users\Public\Documents\APBA Games\Baseball\MicroManagers

Be aware that the “Documents” folder under “Users\Public” is called “Public Documents” in the Windows Explorer folder tree, but it’s the same folder.

Micromanager Self-extracting File Installation

1. In File Manager, double-click on the micromanager exe file name.
2. Use the “Browse” button in the WinZip Self-Extractor window to open the “Browse for Folder” window.
3. Navigate to the proper folder under as listed above.
4. Click the “Unzip” button to install the Micromanager.

MicroManager Installer Utility for diskette-based Micromanagers

Older Micromanagers that were originally distributed by APBA on diskettes, such as the FanManagers, came with their own Setup.exe program. Unfortunately, that setup program will not run on 64-bit versions of Windows.

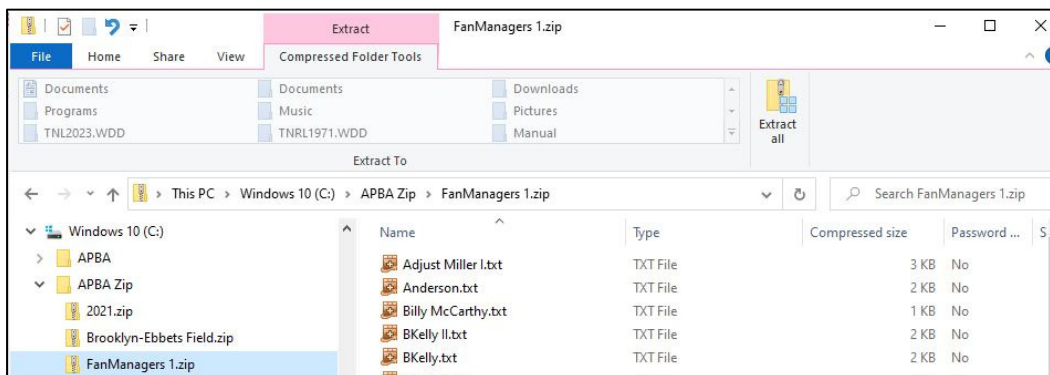
The MicroManager Installer Utility, which can be downloaded from the Baseball 5.75 page at <http://apbagames.com/apbabaseball/baseball-5-75>, resolves that problem. It allows the installation of these older Micromanagers in Version 5.75, whether they are located on the original diskette, in a hard drive folder, or on removable media, such as a data CD or USB drive.

The MicroManager Installer is easy to use, and comes with simple instructions in the form of a Help file.

Micromanagers Distributed as Zip Files

In this example, the file being installed is named “FanManagers 1.zip.”

1. Double-click on the Fan Manager zip file name. This will open the zip file and enable the “Compressed Folder Tools” section in the File Explorer toolbar. Click on the “Extract All” button in the toolbar.



2. Select the destination for the micromanager installation either by typing in the location, or by clicking the “Browse” button to search for the correct destination folder.

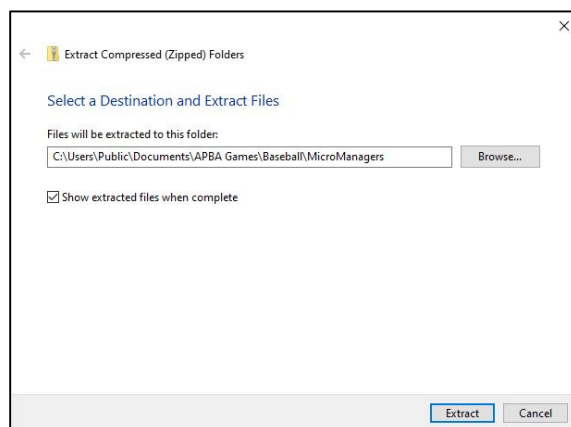
For Baseball 5.75, the correct Micromanagers destination folder name is:

C:\Users\Public\Documents\APBA Games\Baseball\MicroManagers

For BBW 5.5 and earlier, the correct Micromanagers destination folder is:

C:\BBW

(This assumes that BBW was installed in the default location. If you installed BBW in a different folder, select that folder.)



3. Click the “Extract” button. The files will be unpacked to the chosen destination folder. If the “Show extracted files when complete” box is checked, a new window will open that displays the contents of the destination folder.

4. The Fan Managers are now installed and will be available to select in League Manager.

Technical Support

If you encounter problems while installing or using APBA Baseball 5.75, you should start by checking the program documentation.

This Guide covers most of the situations that you will encounter during installation.

The Quick Start Guide and the Help files contained within each of the programs are excellent resources for information about how to use all of the features of APBA Baseball 5.75.

The www.apbagames.com web site will have updated information about any recent issues that have been reported by game owners.

Technical support for APBA Baseball 5.75 is available via e-mail at techsupp@apbagames.com.

Please describe your problem as clearly as possible in your e-mail. You may be asked to provide copies of files that would allow Technical Support to recreate your problem.

There is no telephone technical support.

APBA Games can only provide technical support for currently-available versions of APBA products.

APBA is unable to provide support for any of the following:

- Microsoft Windows installation, configuration, or usage;
- Computer hardware problems;
- Network setup, configuration, or administration;
- Older products originally produced by Miller Associates;
- Older products originally distributed on diskettes;
- Game utilities or data files sold or distributed by third parties.

Contact information for APBA

Mailing Address:

APBA Games
816 Curie Drive
Alpharetta, GA 30005

E-mail:

Technical Support: techsupp@apbagames.com

Customer Support: custsupp@apbagames.com