

# APBA Baseball Version 5.75

## Setup Guide



APBA Games  
816 Curie Drive  
Alpharetta, GA 30005

<http://www.apbagames.com/>

Based on APBA Baseball Master Game, © 1987-2013 APBA Games

Version 5.75 program development by StumpCat Software

Version 5.75 Setup Guide written by Bruce Jones

Second Edition, July 2013 © 2012-2013 APBA Games

Previously published as Version 5.75 Installation and Upgrade Guide

Microsoft and Windows are registered trademarks of Microsoft Corporation

# Contents

- Introduction..... 4
- What's New in APBA Baseball Version 5.75 ..... 4
- Installation of APBA Baseball Version 5.75..... 5
  - System Requirements..... 5
  - Upgrading from a Previous Version of APBA Baseball..... 6
  - Additional Items Included on the Version 5.75 CD ..... 6
  - Using the Setup Wizard ..... 7
- Updates to APBA Baseball Version 5.75 ..... 14
  - Installing Updates ..... 14
- Migrating Data from Previous Versions of APBA Baseball ..... 15
  - Before You Use the Migration Tool ..... 15
  - Using the Migration Tool ..... 16
    - Example 1: Previous APBA Baseball version is on the same computer as 5.75 ..... 16
    - Example 2: Previous APBA Baseball version is on a different computer ..... 22
    - Example 3: 5.75 computer and previous version computer are connected on a network ..... 22
  - Field Effects Migration ..... 23
- Installing Data Disks, Managers, and Ballparks ..... 24
  - Data Disks ..... 24
  - Managers..... 26
  - Ballparks..... 26
- Technical Support..... 27
  - Contact information for APBA ..... 27

# Introduction

Welcome to APBA Baseball Version 5.75! This Setup Guide describes the installation and setup procedures for Version 5.75, whether you are upgrading from a previous version, or installing the program for the first time.

Version 5.75 is the first version of APBA Baseball that can be installed and played on 64-bit versions of Microsoft Windows. Version 5.75 runs as a regular Windows desktop application, without the use of additional operating system software or “virtual” environments.

This Setup Guide does not contain instructions about how to play APBA Baseball Version 5.75. For complete information on playing APBA Baseball, please refer to the Quick Start Guide that is available at the end of the setup process, and to the detailed help files and tutorials that are available from the Help menus within the game programs.

## What's New in APBA Baseball Version 5.75

This new version of APBA Baseball includes the four main programs from previous versions – Broadcast Blast, League Manager, Advanced Draft, and StatMaster – along with two new utility programs:

- Migration Tool provides the ability to transfer installed Data Disks, Managers, and Ballparks from previous versions of APBA Baseball, even if that version is installed on a different computer from Version 5.75.
- League Play File Exchange Tool (LPFET) is a program created for users of Versions 5.0 and 5.5 of APBA Baseball. It enables the exchange of Franchise and Commissioner Files in leagues that are using both Version 5.75 and Versions 5.5/5.0 of APBA Baseball. This program is not needed by users of Version 5.75.

Information about LPFET is contained in a separate document titled *APBA Baseball LPFET User's Guide*. That document and the LPFET program are included on the Version 5.75 CD, and can also be downloaded from the [apbagames.com](http://apbagames.com) web site.

Along with the revisions that were required within the individual programs, numerous improvements have been made. For example, mouse scroll wheels are now supported in all programs, and many right-click popup menus have been added, including the ability to view player card images.

Each of the four main programs has a “What’s New” section in its Help file. Go to Help – What’s New within a program to view a summary of the improvements made within that program.

# Installation of APBA Baseball Version 5.75

## System Requirements

In general, APBA Baseball Version 5.75 will install and run on any computer system that meets the hardware requirements for Microsoft Windows 7 or later. The minimum recommended hardware and software for supported versions of Windows are as follows:

- Microsoft Windows XP Service Pack 3 or later version, including both 32-bit and 64-bit versions of Windows Vista Service Pack 2, Windows 7 Service Pack 1, and Windows 8.

XP Mode in Windows 7 Professional and Ultimate versions is supported, but it is **strongly recommended** that you install Version 5.75 directly in Windows 7, rather than under XP Mode, for best performance and compatibility. Because of the new 64-bit compatibility in Version 5.75, XP Mode is no longer needed.

- 1 GB available hard disk drive space is the minimum amount recommended for installation of the program files and multiple season data disks. If large numbers of season disks are being installed, particularly if statistics and box scores are being saved, additional hard drive space may be required. A data disk containing a single completed league season, with all box scores saved, can require 200 MB or more of disk space.
- CD or DVD drive, internal or external, for installation of the 5.75 program, additional season disks, and ballpark disks.
- Processor, memory, and video card that meet the requirements for the installed version of Windows. Most computers that were designed for Windows Vista or later will have sufficient resources to run Version 5.75.

While Windows XP Service Pack 3 is supported, please be aware that some older computers with Windows XP installed may have outdated hardware (particularly video cards and monitors) that will not properly support all of the features in Version 5.75.

- It is **highly recommended** that you install the most recent Windows hardware device drivers (particularly video drivers) and the latest system BIOS for your computer. Device drivers and system BIOS updates can usually be found on the hardware manufacturer's web site. For Windows Vista and later versions, many hardware device drivers are provided automatically through Windows Update.

Please note that the use of non-default Windows display settings, such as Windows text sizes larger than 100%, unusual monitor resolutions, or the use of an older monitor and/or video card, may cause compatibility problems with some of the newer graphical features in Baseball 5.75, such as View Card pop-up windows. Most users will not experience these problems.

## Upgrading from a Previous Version of APBA Baseball

If you are a new user of APBA Baseball, skip ahead to the following section, "Using the Setup Wizard."

APBA Baseball 5.75 uses different folders for the installation of programs and data files than were used in previous versions of APBA Baseball. This means that an older version of the program will not be overwritten, but will be completely unaffected by the installation of 5.75. The new and old versions can continue to be used on the same computer, and will contain their own separate libraries of installed Data Disks, Micromanagers, and Ballparks.

Because of the change in folder structure, the process of upgrading from an earlier version of APBA Baseball to Version 5.75 consists of two steps:

1. Installation of Version 5.75
2. Migration of Data Disks, Managers, and Ballparks from the previous version to 5.75

The following sections of this Guide contain complete instructions for completing these two steps.

## Additional Items Included on the Version 5.75 CD

The current APBA Baseball Version 5.75 CD contains the Update #10 versions of all programs.

The Version 5.75 Setup program installs six Ballparks:

- Chicago North
- Cincinnati 1970
- Detroit 1912
- Forbes Field
- Minnesota 1982
- New York Bronx 1976

Four Micromanagers are also installed:

- Cap Spalding, Jr.
- Duke Robinson, Jr.
- Larry Pepper
- Johnny McCoy

The Setup CD also contains three season Data Disks - 1921, 1961, and 2011 - that can be selected for installation during initial setup, or installed at a later time.

## Using the Setup Wizard

The screen images in this section represent installation under Windows Vista, 7, and 8. The default program and data folders are different under Windows XP, so differences in the procedures for Windows XP will be described where appropriate.

There are minor differences between the content of the original setup program screens shown here and the ones that are displayed by the updated setup program, but the setup process itself is unchanged.

1. Insert the APBA Baseball 5.75 CD into a CD/DVD drive. Depending on your Windows version and AutoPlay settings, a popup window with one or more actions that can be performed on the CD may open. If so, select the option to run Setup.exe from the CD. If that option is not displayed, then open Windows Explorer, browse to your CD drive, and double-click Setup.exe.

If you are prompted by Windows User Account Control or your anti-virus program to confirm that you want to run Setup.exe, click the “Yes” or “OK” button on the confirmation window.

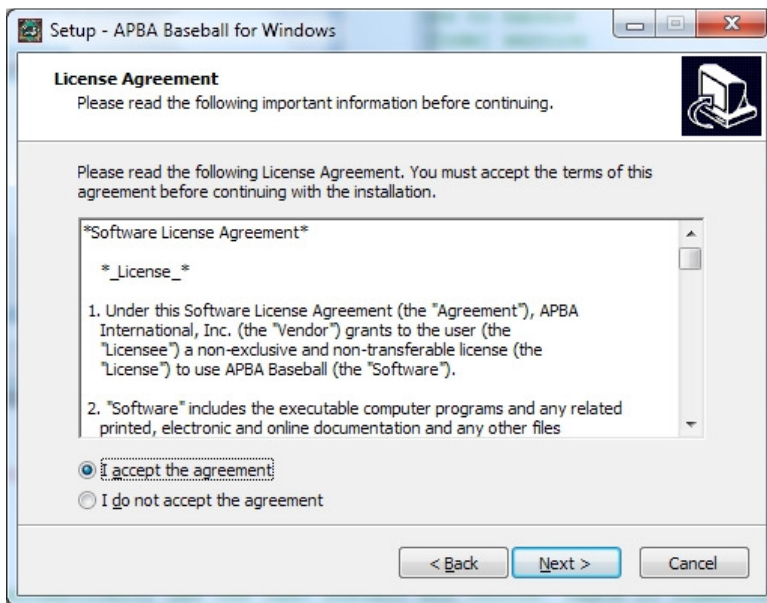
2. The Setup Wizard will open. Click the “Next” button.

On any screen in Setup, you can click the “Back” button to return to the previous screen, or the “Cancel” button to cancel Setup.

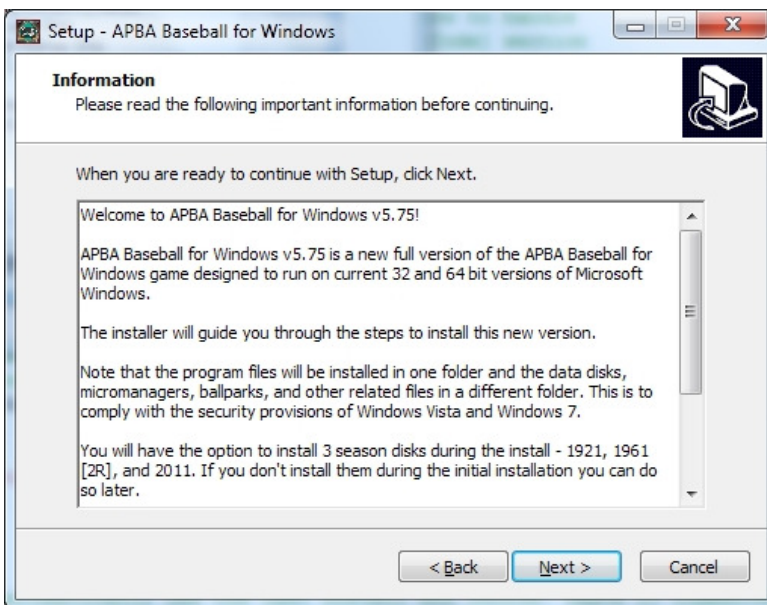
You can also open an on-screen copy of this Setup Guide by clicking the “View the Install Guide” button.



3. The License Agreement screen will appear. Read the License Agreement before continuing. When you are finished, click the radio button next to “I accept the agreement” and click the “Next” button.



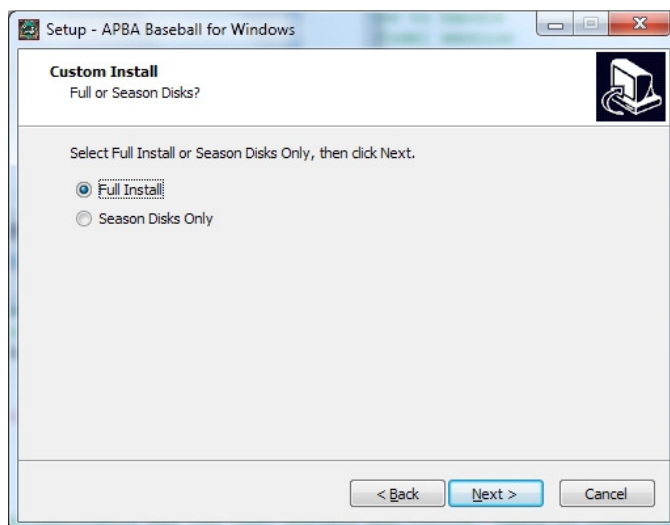
4. The Information screen will be displayed. Read the important information in this window before continuing. When you are finished, click the “Next” button.





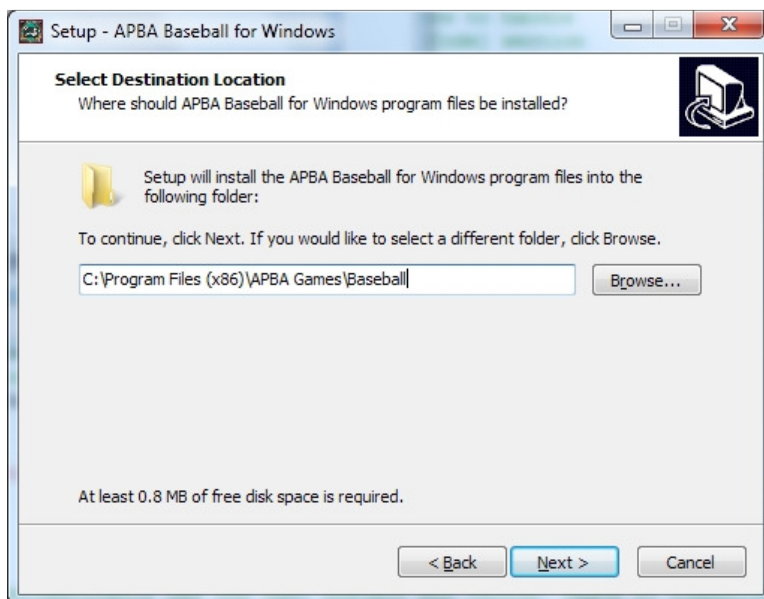
5. This step does not apply to the initial installation of Version 5.75. This screen will only appear if you execute Setup again on a computer on which 5.75 has already been installed. The first-time installation instructions continue with Step 6.

The Custom Install screen will allow you to choose whether to do a Full Install of all programs and data files, or to install the three included Season Disks Only. This allows you to return to Setup and install the season disks later if you chose not to install them during the initial installation. Please note that you will be given a chance on a later screen to decide which of the three season disks, if any, that you would like to install.



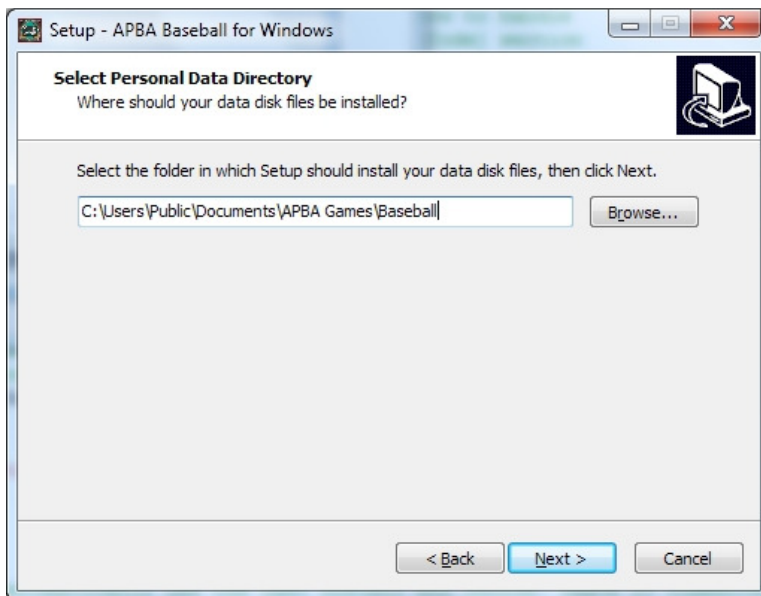
6. The default program file location is displayed. For a Windows XP installation, the default program file path is slightly different - C:\Program Files\APBA Games\Baseball.

Although you are given the ability to select a different folder for installation, it is **strongly recommended** that you use the default folder location. Click the “Next” button to continue.

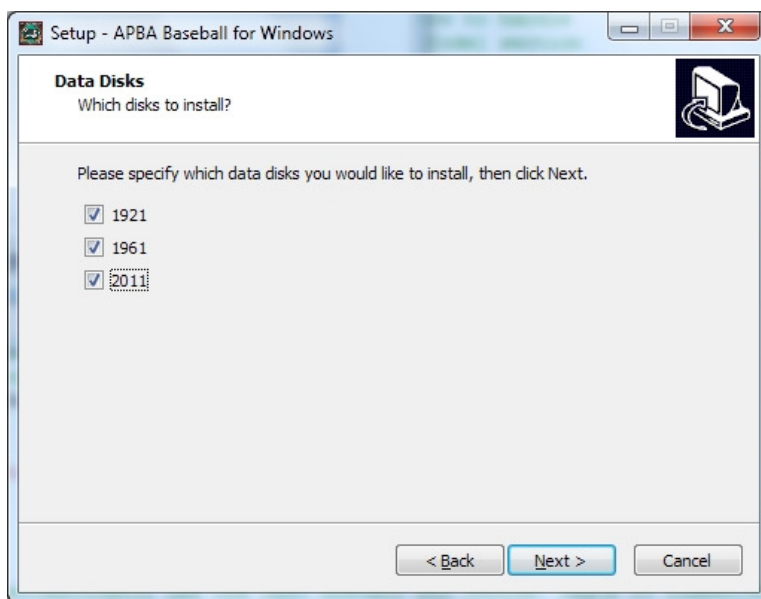


7. The Select Personal Data Directory screen appears. The default data folder for Windows XP is C:\Documents and Settings\All Users\Documents\APBA Games\Baseball.

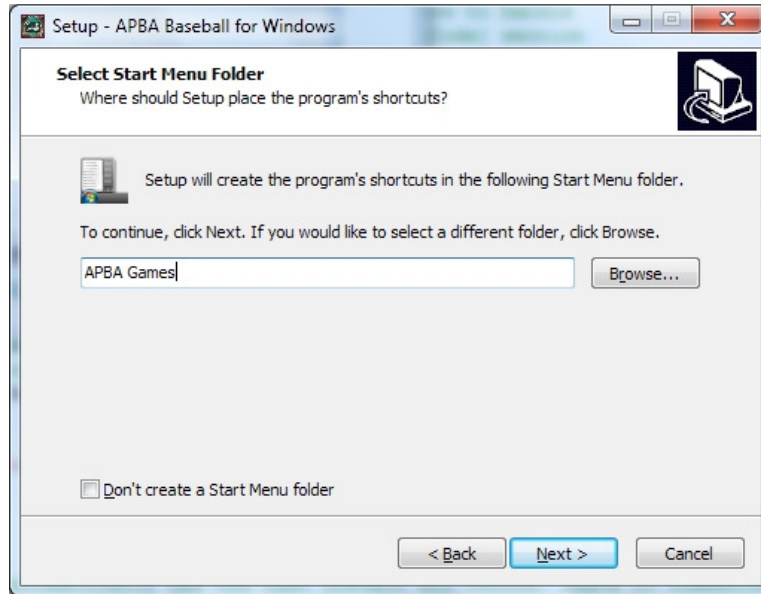
Again, although you are given the ability to select a different folder for data, it is **strongly recommended** that you use the default folder location. Click the “Next” button to continue.



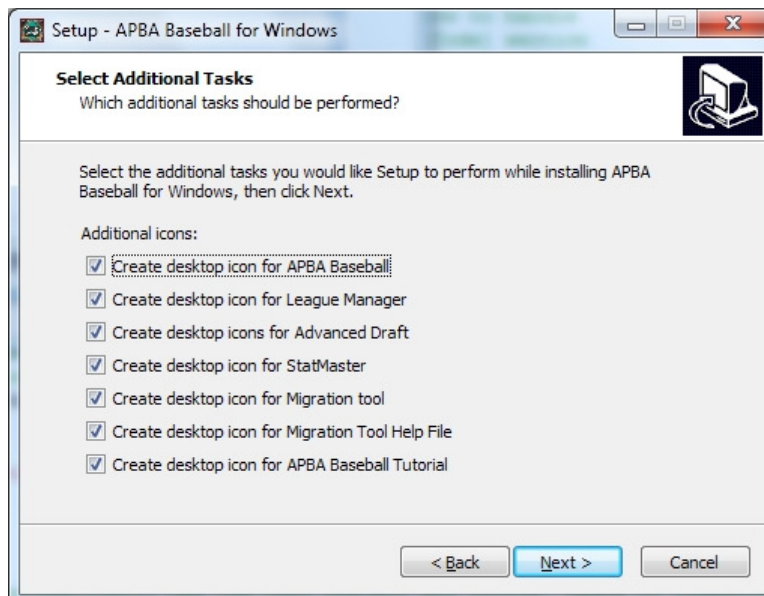
8. The Data Disks screen is displayed. This is where you are able to select which of the three included season data disks you wish to install at this time. Click the check box next to each season that you wish to install. You can run Setup again later and install any seasons that you do not choose to install now. When you have finished selecting the seasons to install, click the “Next” button.



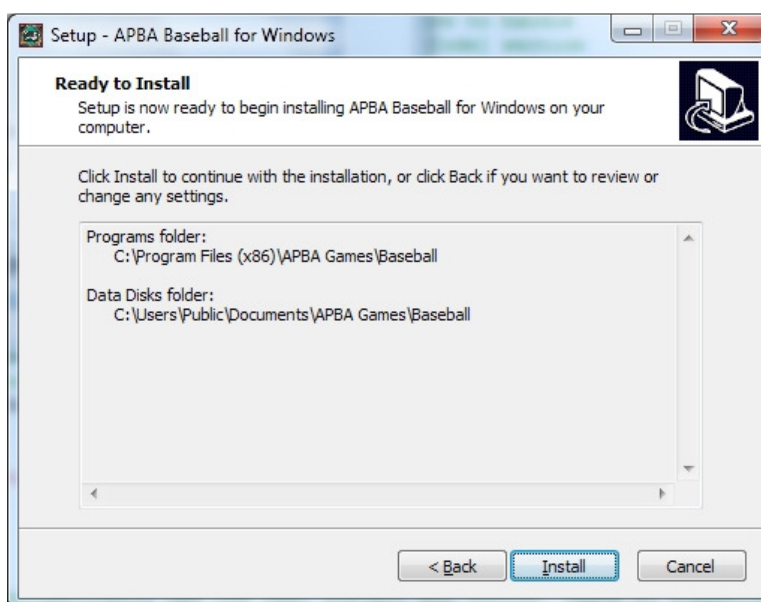
9. The Select Start Menu Folder screen allows you to select the folder in the Start Menu that will contain the 5.75 program icons. You can also select not to create a folder in the Start Menu by clicking the check box at the bottom of the screen. Most users should accept the default folder name of “APBA Games” and click the “Next” button.



10. The Select Additional Tasks screen allows you to choose whether to create icons for the 5.75 programs and documentation on your Windows Desktop. These are entirely optional – you are not required to use them. Select whichever icons you wish to have Setup create for you. When you are finished making your selections, click the “Next” button.

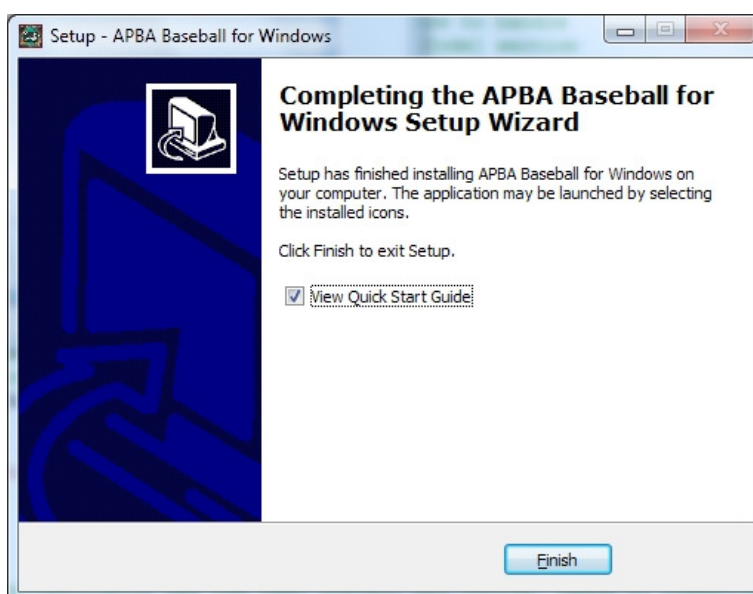


11. The Ready to Install screen will display the folder selections that were made on previous screens. If these are correct, click the “Install” button. Otherwise, click the “Back” button and continue back until you reach the screen with the information that you wish to change.



12. The Installing screen will appear and display a progress bar as it extracts the files, copies them to your computer, and configures the programs. This will take several minutes, depending on the speed of your computer and your hard drive.
13. When the installation is finished, the Completing the Setup Wizard screen will be displayed. You have the option of selecting to view the Quick Start Guide after the Setup Wizard has closed. The Quick Start Guide is a useful overview of the program’s functions, and should be viewed by all new users.

Click the “Finish” button to close the Setup Wizard and complete the installation.



14. Once the CD installation has completed, follow the instructions in the next section of this Guide, “Updates to APBA Baseball 5.75,” to check for, obtain, and install the most recent program Updates for Baseball 5.75.

15. Congratulations! You’re ready to play APBA Baseball 5.75.

Depending on the selections that you made during Setup, you can start the individual 5.75 programs through the Start Menu, or by using icons on the Windows Desktop.

You can now install additional season Data Disks, Ballparks, and Managers, using the instructions given on those disks and in the “Installing Data Disks, Managers, and Ballparks” section of this Guide.

If you have a previous version of APBA Baseball, you can use the new Migration Tool utility to transfer your previously-installed data files into 5.75. The Migration Tool is automatically installed during Setup. See the following section of this Guide, “Migrating Data from Previous Versions of APBA Baseball,” for complete instructions on using the Migration Tool.

## Updates to APBA Baseball Version 5.75

The current APBA Baseball Version 5.75 CD contains the Update #10 versions of all programs.

Updates for Baseball 5.75 will be made available periodically on the [www.apbagames.com](http://www.apbagames.com) web site. These Updates will contain software patches for issues that have been reported to APBA by game owners, and may also include functional upgrades for the individual programs within Baseball 5.75.

Updates are cumulative, so all of the features and patches that were included in previous Updates will also be included in the most recent Update. This means that a new install (or re-install) of Baseball 5.75 will only need to have the most recent Update applied to bring it up to the current level.

Updates will normally provide complete replacements for all of the individual programs, and may also include new or revised documentation. An Update Information document that describes the changes included within the Update will also be made available on the [www.apbagames.com](http://www.apbagames.com) web site.

### Installing Updates

The typical installation process for a Baseball 5.75 Update is as follows:

1. Go to the Baseball 5.75 page at <http://apbagames.com/apbabaseball/baseball-5-75> and click on the link for the current Update. This link may also appear in the “What’s New” list on the apbagames.com main page.
2. Depending on the web browser that you used to access the web site, you may be prompted to Save or Run the file. Choose “Save” and select an appropriate location, such as your default Download folder or your Windows Desktop. Remember where you saved the file!
3. The file will be in compressed .zip format, and will have a filename such as APBA575Update9.zip. The method used to extract the contents of the zip file will depend on your version of Windows. Windows Vista and later versions have the ability to open zip files directly. Windows XP users will need to obtain a separate unzip utility program.
4. The zip file will contain an executable program file with a filename such as APBA575Update9 Setup.exe. Save the extracted .exe file to your Windows Desktop or your default Download folder. Remember where you saved the file!
5. Double-click the .exe file to start the Update process. If you receive a User Account Control popup window, click the “Yes” button to continue.
6. Most of the screens displayed during the Update install will be the same as the ones that are displayed during the program installation process, as described in the previous section of this Guide. The main differences will be in any new screens that are required to choose options for a newly-added feature, such as the screen that is displayed for the installation of Field Effects files. The last screen will include an option that will allow you to display the Update Information file after you exit Setup.

Once you complete the above steps, Baseball 5.75 will be updated to the most recent version.

## Migrating Data from Previous Versions of APBA Baseball

*IMPORTANT NOTE: The Migration Tool will now transfer existing Ballpark Field Effects files. If you have already migrated your Ballparks using a previous version of the Migration Tool, please see the topic “Field Effects Migration” later in this document.*

APBA Baseball 5.75 stores Season Disk, Ballpark, and Micromanager data files in a new folder structure. As a result, the data file locations for these items are different from the folders used in earlier versions of APBA Baseball.

If you have previously installed Version 5.5 or earlier, you can manually copy your existing Ballpark and Micromanager files into the proper folders in 5.75 and reinstall your Season Disks. However, if you would like some automated assistance with copying your data, you can use the new Migration Tool utility to assist you in transferring your existing Season, Ballpark, and Micromanager files into 5.75.

The Migration Tool allows you to select which of your existing data files you want to transfer from your previous APBA Baseball installation to 5.75. It can be used even if your previous version is installed on a different computer. Examples of different ways to use the Migration Tool are shown below.

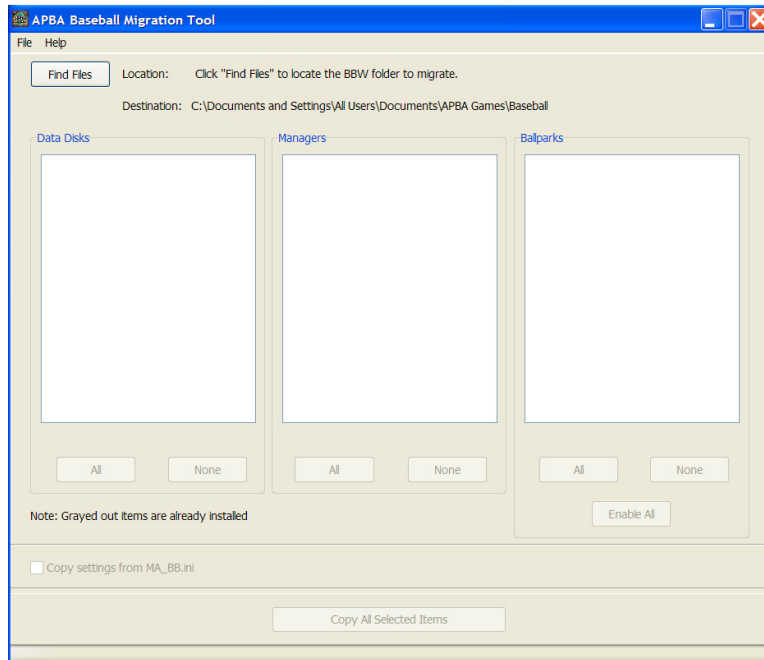
### Before You Use the Migration Tool

Please understand that the Migration Tool is provided as an aid for transferring valid existing data from an older version of APBA Baseball. The Migration Tool does some basic checking of the input data for validity, as described in the “Using” section. However, it will not be able to detect all cases of corrupt, missing, or incomplete data, such as data disk file errors, missing ballpark graphics, and incomplete micromanager files, nor will it be able to identify files that have been corrupted due to hard drive errors. These files would not be usable in previous versions of APBA Baseball, either.

It is strongly advised that you examine all of your existing data files and folders prior to migration, to determine whether there is unneeded or potentially faulty data that should not be migrated.

## Using the Migration Tool

The screen images in this section show the Migration Tool running on Windows XP SP3.



Example 1: Previous APBA Baseball version is on the same computer as 5.75

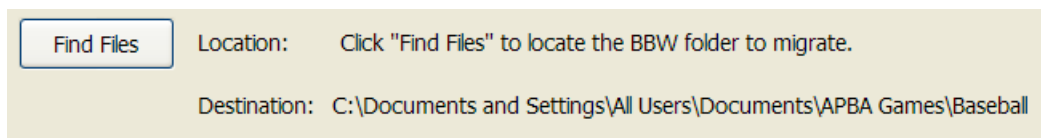
1. Go to the Windows Start Menu, and select All Programs – APBA Games – Migration Tool in Windows 7/Vista, or Programs – APBA Games – Migration Tool in Windows XP. If you chose to have a Migration Tool shortcut placed on the Windows Desktop during installation of Version 5.75, you can use that shortcut icon to run the tool.

### Important additional instructions for users of Windows 7/Vista Professional XP Mode:

If the previous version of APBA Baseball is installed under the XP Mode feature of Windows 7/Vista Professional, you must copy the Migration Tool program file (C:\Program Files (x86)\APBA Games\Baseball\Migration.exe) to the XP Mode Desktop and run it from there.

If the default values were used when both XP Mode and 5.75 were installed, the Migration Tool will locate the destination 5.75 data folder path automatically. If the 5.75 data folders are not found, the “Change Dest” button will be displayed. Click the “Change Dest” button and browse to the correct Baseball data folder location.

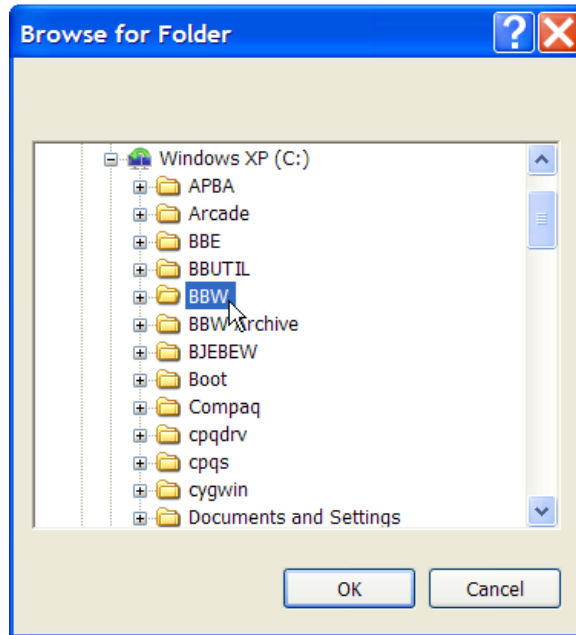
The default 5.75 data folder path, as seen from the XP Mode Desktop, is:  
\\tsclient\C\Users\Public\Documents\APBA Games\Baseball.



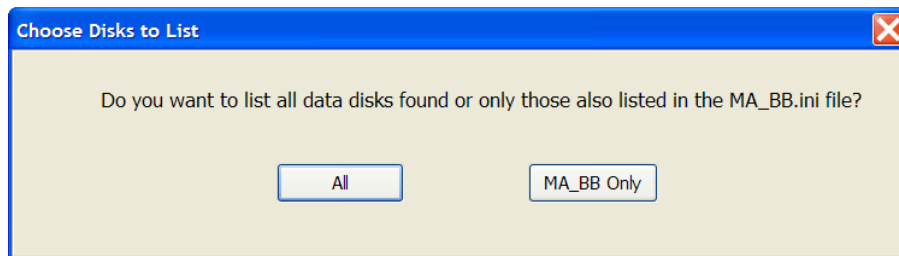
2. Click the “Find Files” button. The Browse for Folders window will open.



- Using the drive and folder menu in the Browse for Folders window, locate and select the folder that contains your previous APBA Baseball installation. For most users, this will be C:\BBW. If you installed the previous version to a different drive or folder, select that folder.

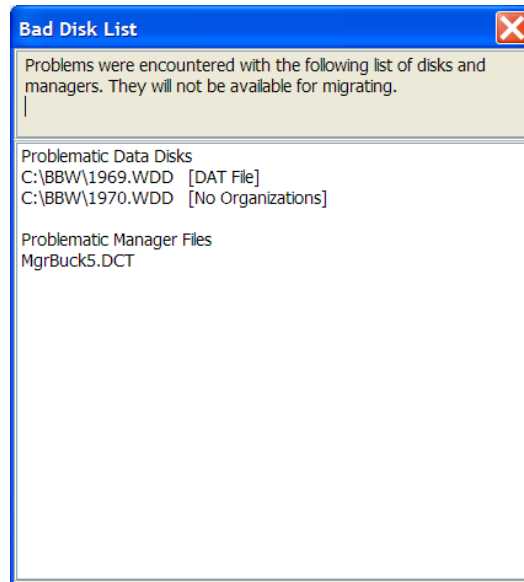


- Click the “OK” button once you have selected the correct folder.
- If the MA\_BB.ini file is found in the C:\WINDOWS folder, a popup window will appear that gives you a choice of listing all of the .WDD data disk folders located under your BBW folder, or of listing the data disk folders that are also recorded in the MA\_BB.ini file. The main difference between the two options is that the ini file contains data disk descriptions which would be migrated to 5.75. On the other hand, it is possible that you have some (probably unofficial) data disks that are not currently listed in your ini file. You may wish to run the Migration Tool first with option “MA\_BB Only,” then run it a second time with option “All” to look for other folders.  
If the MA\_BB.ini file is not found, then all of the .WDD data disk folders located under the BBW folder will be listed.



6. The Migration Tool will now examine the available Season Data disks, Micromanagers, and Ballparks, and do basic error checking. A status bar window will be displayed on the screen during the examination of disks.

If any problems are encountered with Data disks or Micromanagers, the Bad Disk List window will appear.



For each Data disk error, a reason will be given in brackets after the disk name. The reasons that may be displayed for bad Data disks are as follows:

- [Schedule]
  - a) If the Schedule.org in any data disk \ORGxxxxx subfolder is 0 bytes.
  - b) If a test loading of the Schedule.org fails (something is bad within the file.)
- [DAT File]
  - a) The Players.Dat, NStat.Dat, or PStat.Dat file is missing or is 0 bytes.
  - b) Any of those files are not of the proper size, which indicates corruption of the file.
- [No Organizations]
  - a) The data disk has no organizations – there are no \ORGxxxxx files in the data disk folder.
  - b) The Org.Dat file in the \ORGxxxxx subfolders is missing or corrupt.
- [Invalid Path]

Primarily a safety check. This error is highly unlikely to occur.
- [Unknown Error]

While verifying the disk, a problem was encountered with the disk, and verification of the disk stopped. Most likely caused by a corrupt or missing file.

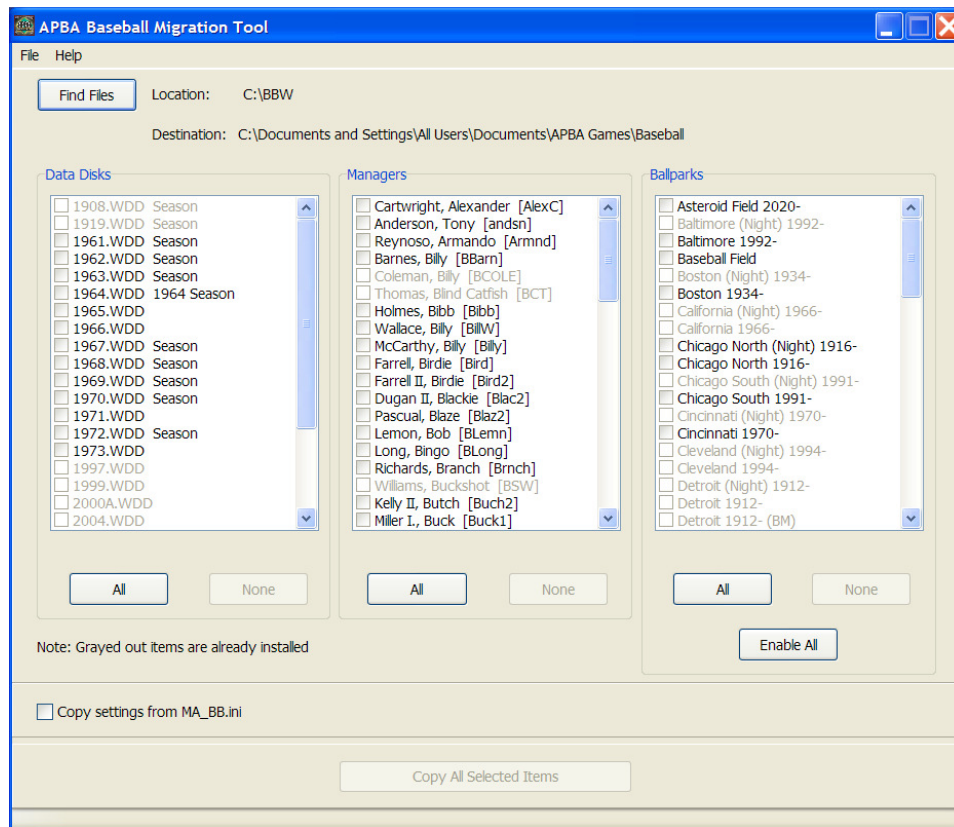
An error in ANY organization on a Data disk (the \Orgxxxx subfolders) will set the disk as bad.

For Micromanagers, the Migration Tool looks for .DCT files and attempts to read the manager's name from the file. If it succeeds, the Manager is considered to be valid. If it fails, the .DCT is considered corrupt, and its filename is displayed in the Bad Disk List.

Any Ballpark for which an ini file exists will be considered valid. The Migration Tool will ignore any Ballpark graphics if an ini for that Ballpark is not found. No Ballpark errors will be displayed.

After you have reviewed the Bad Disk List, close the window to continue the migration process.

7. The valid installed Data Disks, Managers, and Ballparks will now be displayed in the Migration Tool window.



8. Click the check box next to each file that you wish to migrate to 5.75.

Any Data Disks, Managers, and Ballparks that are already installed in 5.75 will be grayed out and will not be selectable.

If you wish to migrate all files that have not already been installed in 5.75, click the "All" button at the bottom of each file type list. Note that you must click the "All" button for each of the three file types in order to migrate every available file.

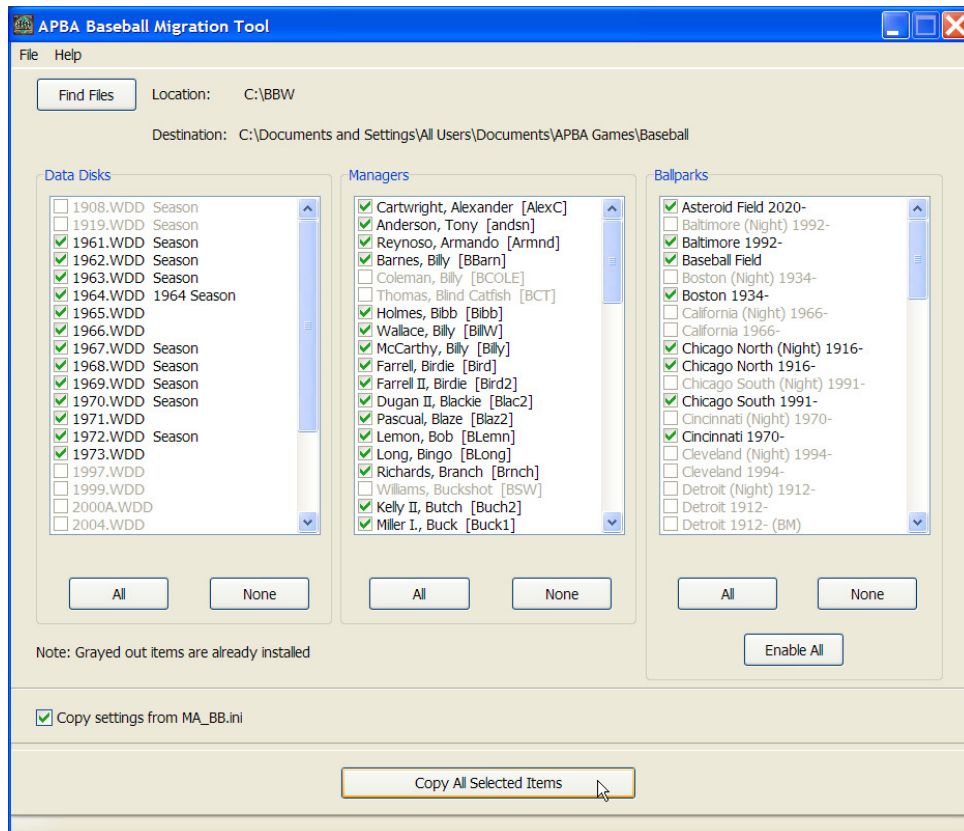
If all items in a category are already installed, the "All" button will be grayed out.

After you have selected one or more check boxes in a category, you can quickly deselect all of them by clicking the "None" button for that category.

You also have the option of migrating your program preferences settings from the MA\_BB.ini file in the C:\WINDOWS folder of your previous version of APBA Baseball (if that file is found.) Existing program options will be copied into the configuration file for 5.75.

Click the check box marked “Copy settings from MA\_BB.ini” to select this option.

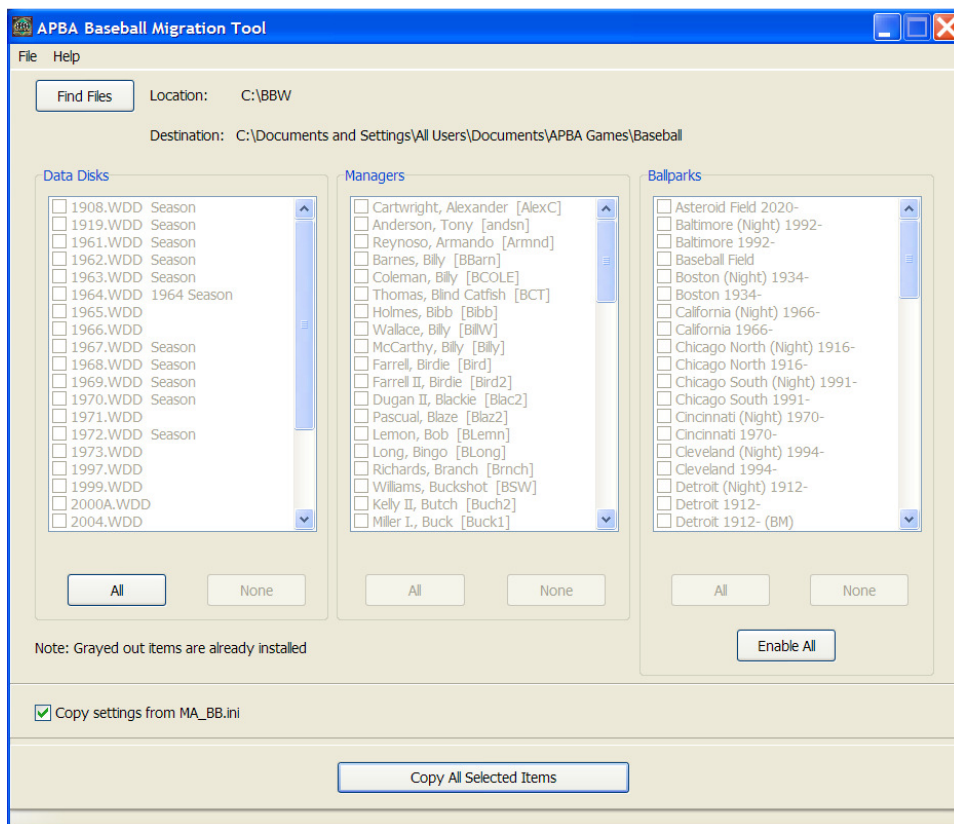
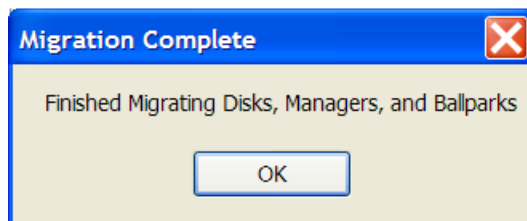
Note that you may need to re-select your default ballpark in 5.75 after the migration has been completed, if that ballpark was not already installed prior to the migration.



9. When you have finished making your selections, click the “Copy All Selected Items” button. The migration process will begin. The names of the files being copied will be displayed on the status bar at the bottom of the window. A smaller Windows file copy progress window may also appear if many files are being migrated.

The length of time required to complete the migration will depend on the number of data disks being migrated and the speed of the computer. Data disks that contain multiple organizations and/or box scores and other completed season play data will take much longer to copy than disks that do not include such data. Managers and Ballparks will be copied very quickly.

10. When the migration has been completed, a confirmation window will display, and all of the selected files will be grayed out in the file type lists. Click the “OK” button to close the Migration Complete window.



11. Close the Migration Tool by selecting File – Exit, or by clicking the white X in the red box in the top right corner.

## Example 2: Previous APBA Baseball version is on a different computer

In order to migrate data files from a previous version of APBA Baseball that is installed on a different computer than 5.75, you must copy the BBW folder on the other computer, and all files and folders located within it, to removable media. This can be a CD, DVD, USB flash drive, or USB external hard drive. Both the computer containing 5.75 and the computer containing the previous APBA Baseball version must support the type of removable media that is chosen.

If you wish to migrate your program preferences settings from the previous version, you will also need to copy the MA\_BB.ini file to the CD, DVD, or USB device.

Please note that, unless the previous version of APBA Baseball contains a small number of data files, the BBW folder structure may not fit on a data CD. DVDs and USB drives should have sufficient capacity for most users.

The additional steps for migrating data files from a different computer are as follows:

1. Copy the entire BBW folder structure (usually C:\BBW) and, optionally, the MA\_BB.ini file (usually in the C:\WINDOWS folder) from the previous version of APBA Baseball to your chosen type of removable media.
2. Remove the disc or USB device from the other computer and insert it into the computer on which you have installed 5.75.
3. Follow all of the instructions listed in Example 1 above. In Step 3, select the disc or external drive that contains the copied BBW folder.

## Example 3: 5.75 computer and previous version computer are connected on a network

If the computers containing the two versions of APBA Baseball are connected through a network, and if file sharing is enabled on each computer, the migration can also be conducted across the network. You should only use this method if you are very familiar with computer network setup and configuration. APBA cannot provide technical support for networking issues.

The procedure would be the same as in Example 1 above, except in Step 3, you would select the computer containing the previous version, and the BBW folder on that computer. The MA\_BB.ini file in C:\WINDOWS will be located automatically by the Migration Tool.

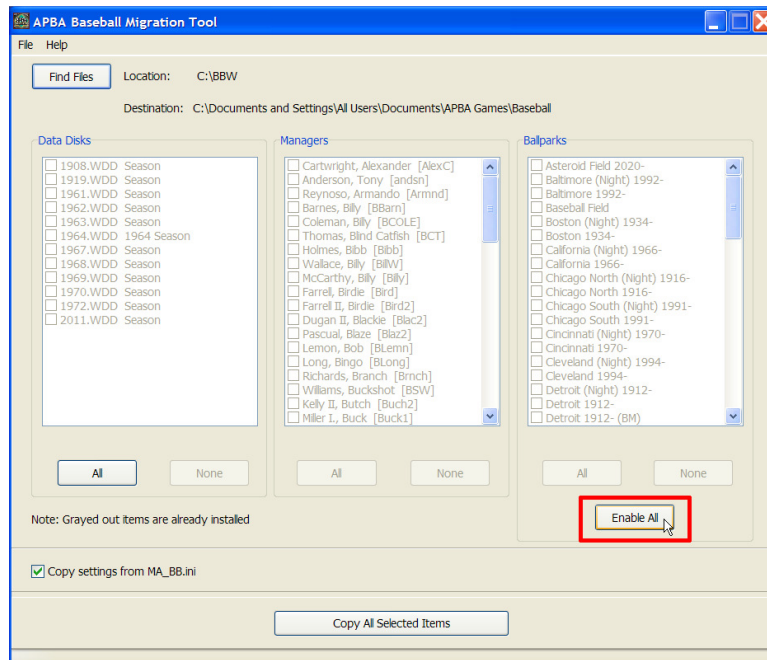
## Field Effects Migration

The current version of Migration Tool will migrate Field Effects files that were installed in a previous version of APBA Baseball to Baseball 5.75. This should resolve the issue that some users of the original version of Migration Tool have experienced with loss of Field Effects for a few older Ballparks that are no longer available from APBA.

For those users who have already migrated their Ballparks, a new feature has been added to Migration Tool that will allow all of your existing Ballparks to be re-migrated from your previous version of Baseball, this time with the FE files included.

To re-enable your Ballparks so that they can again be selected for migration:

1. Start the current version of Migration Tool.
2. Make sure that the correct BBW folder location has been selected.
3. Click the “Enable All” button at the bottom of the Ballparks list.



4. Select the Ballparks that you wish to re-migrate with their Field Effects files included. In most cases, you will only need to re-migrate Ballparks that are no longer in use and are therefore not included in the current annual FE file updates.
5. Click the “Copy All Selected Items” button.

# Installing Data Disks, Managers, and Ballparks

As previously described, the folder locations for Data Disks, Managers, and Ballparks have changed in APBA Baseball Version 5.75. The Install Data Disk functions within Baseball Blast and the other programs will install season disks into the proper location. For Managers and Ballparks, which have their own installation methods, you simply need to provide the correct folder path during installation.

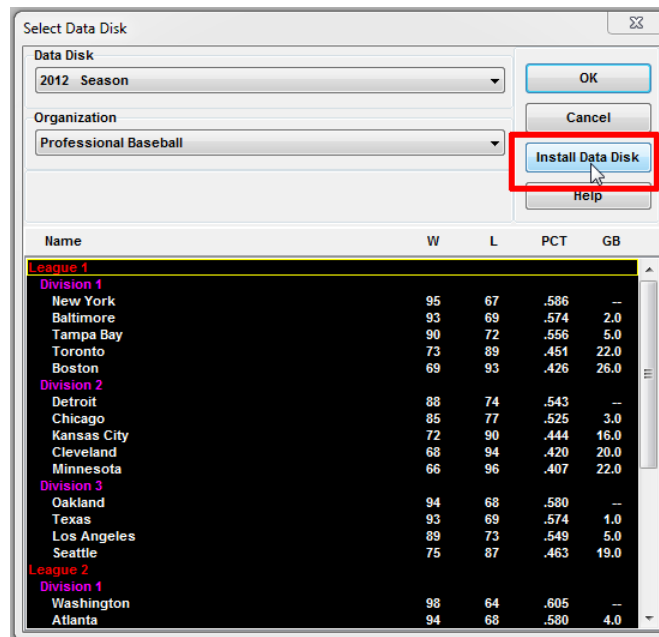
## Data Disks

The Install Data Disk process is basically the same as it was in earlier versions of APBA Baseball. Data Disks can be installed from a CD, or the files on the CD can be copied to a folder on an internal or external drive and the Data Disk can be installed from that folder.

Broadcast Blast, Advanced Draft, League Manager, and StatMaster all have the ability to install a new Data Disk. The menu choices used to navigate to the Install Data Disk function are somewhat different in each program:

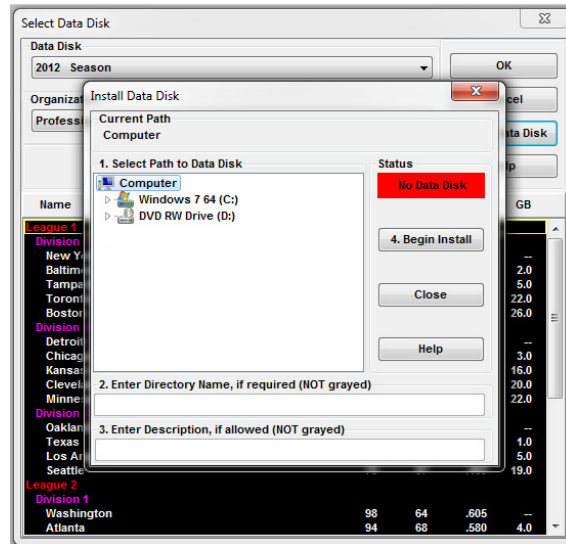
- In Broadcast Blast, the menu path is Play Ball – Game (or Play Ball - Series).
- In Advanced Draft, the menu path is Select – Load Data Disk.
- In League Manager, the menu path is Select – Load Organization.
- In StatMaster, the menu path is Select – Open.

All of these will open the Select Data Disk window (except Broadcast Blast, which opens the Select Teams window). On the upper right side of this window, click the “Install Data Disk” button to open the Install Data Disk window.





Select the path to the new Data Disk, which can be located on a CD or in a folder on any internal or external drive that is attached to your computer.

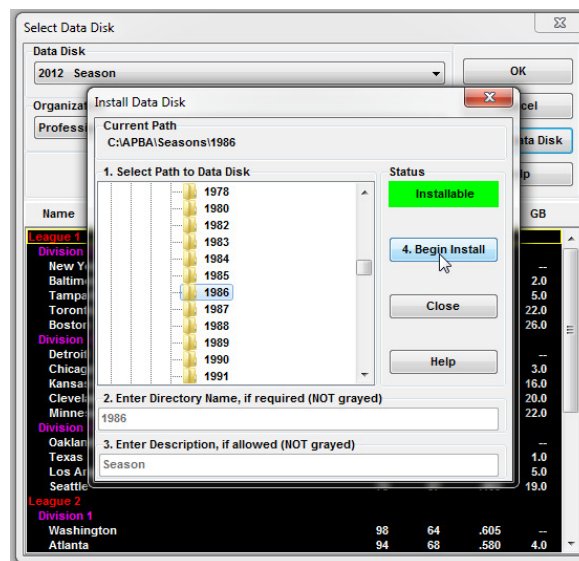


If a valid Data Disk is selected, the Status indicator will change from a red “No Data Disk” message to a green “Installable” message. If the Data Disk has already been installed on this computer, the Status indicator will change to a yellow “Installed” message.

If the disk being installed is an official APBA season disk, the Directory Name and Description fields will be pre-filled and grayed. If not, you will be able to edit the information in the two fields as you desire.

When you are finished entering information, click the “4. Begin Install” button. The Data Disk will be installed in a few seconds, and will now be available to choose in the Select Data Disk screen.

In the example below, the official APBA 1986 season disk is being installed from a folder on the C: drive, C:\APBA\Seasons\1986.



## Managers

APBA Baseball Micromanagers are generally provided in one of two formats: a self-extracting exe file, or a compressed zip file. Regardless of which way the Manager is packaged, the key to installing him correctly in Version 5.75 is to point to the correct output folder when you are unpacking the files.

**C:\BBW is NOT the correct install folder for Managers in APBA Baseball Version 5.75.**

For Windows Vista/7/8, the default Manager folder is:

C:\Users\Public\Documents\APBA Games\Baseball\MicroManagers

For Windows XP, the default Manager folder is:

C:\Documents and Settings\All Users\Documents\APBA Games\Baseball\MicroManagers

Use the navigation aid (usually a “Browse” button) that is provided by the self-extracting exe file or by your zip file unpacking utility (Windows Explorer, WinZip, 7-Zip, etc.) to navigate to the proper folder as listed above, and unzip the Manager files into that folder.

## Ballparks

All Ballparks currently available from APBA are provided on CD. The installation program contained on the CD (usually named Setup.exe) is a self-extracting exe file that unpacks the Ballpark files to a folder.

As with Data Disks, the Ballpark can be installed directly from the CD, or the exe file on the CD can be copied to a folder on an internal or external drive, and then run from the folder.

As described above for Managers, you must point to the correct output folder when you are unpacking the Ballpark files. **C:\BBW is NOT the correct install folder for Ballparks in APBA Baseball Version 5.75.**

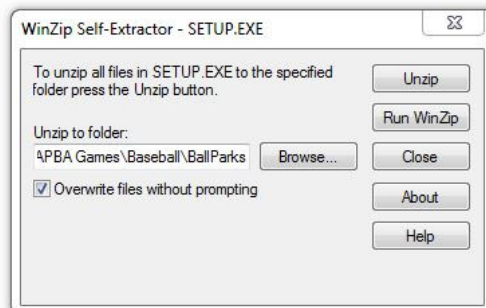
For Windows Vista/7/8, the default Ballpark folder is:

C:\Users\Public\Documents\APBA Games\Baseball\BallParks

For Windows XP, the default Ballpark folder is:

C:\Documents and Settings\All Users\Documents\APBA Games\Baseball\BallParks

Use the “Browse” button in the Self-Extractor window to open the “Browse for Folder” window, navigate to the proper folder as listed above, and click the “Unzip” button to install the Ballpark.



# Technical Support

If you encounter problems while installing or using APBA Baseball 5.75, you should start by checking the program documentation.

This Guide covers most of the situations that you will encounter during installation and migration.

The Quick Start Guide and the Help files contained within each of the programs are excellent resources for information about how to use all of the features of APBA Baseball 5.75.

The [www.apbagames.com](http://www.apbagames.com) web site will have updated information about any recent issues that have been reported by game owners.

If you need additional assistance, owners of APBA Baseball 5.75 are entitled to telephone technical support at no additional cost. Telephone support is available on weekdays from 9:00 AM to 5:00 PM, Eastern Time.

Technical support for APBA Baseball 5.75 is also available via e-mail at [techsupp@apbagames.com](mailto:techsupp@apbagames.com). Please describe your problem as clearly as possible in your e-mail. You may be asked to provide copies of files that would allow Technical Support to recreate your problem.

## Contact information for APBA

### Mailing Address:

APBA Games  
816 Curie Drive  
Alpharetta, GA 30005

### Customer Service and Sales:

(800) 334-2722  
Fax: (770) 622-8834

### E-mail:

Technical Support: [techsupp@apbagames.com](mailto:techsupp@apbagames.com)

Customer Support: [custsupp@apbagames.com](mailto:custsupp@apbagames.com)

APBA Games can only provide technical support for APBA products. APBA is unable to provide support for any of the following:

- Microsoft Windows installation, configuration, or usage;
- Computer hardware problems;
- Network setup, configuration, or administration;
- Game utilities or data files sold or distributed by third parties.