

LPFET Installation and Usage

Using APBA Baseball 5.75 in Leagues

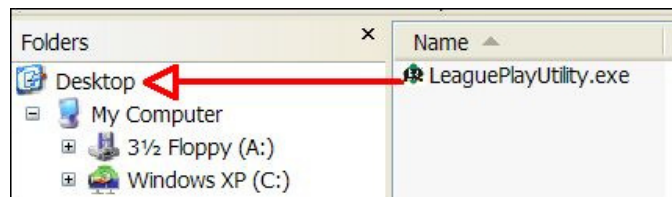
APBA Baseball 5.75 can be used in draft and replay leagues in the same way as earlier versions of the program. Please note, however, that Franchise Files, Commissioner Files, and Backup files from Version 5.75 cannot be processed by earlier versions, and 5.75 is unable to read any of those files that were created on earlier versions. The file compression technology that was used in earlier versions is not compatible with 64-bit Windows.

In order to allow the exchange of F-files and C-files between managers who are using Version 5.75 and managers who are using Version 5.5 or 5.0, the League Play File Exchange Tool (LPFET) is included on the Version 5.75 CD. While the LPFET may work with earlier versions of APBA Baseball, it is only supported for use with Version 5.5 and 5.0 (which will be referred to as 5.x for the rest of this section.)

While it is preferable to have all members of an APBA Baseball league use Version 5.75 of the program, the LPFET allows you to have mixed leagues, where the members use a combination of 5.75 and 5.x. The members who are using Version 5.x will need to install the LPFET, which will allow them to convert 5.75 C-files and F-files to 5.x format, and to convert 5.x C-files and F-files to 5.75 format.

Installing League Play File Exchange Tool

1. Load the APBA Baseball 5.75 CD onto the computer that contains Version 5.x.
2. Using Windows Explorer, locate the Tools folder on the CD.
3. Copy the LeaguePlayUtility.exe program from the CD to the computer. This can be done in several ways, but the simplest is to drag the program from the CD drive to the Desktop folder.



4. Double-click the LeaguePlayUtility icon on your Windows Desktop to open the program.

LPFET Basics

The functions that are provided in the main LPFET window allow you to create and load Version 5.75 C-files and F-files for a league data disk that is installed in Version 5.x.

LPFET uses Commissioner file and Franchise file dialog windows that are basically the same as those screens in Version 5.75, and very similar to the ones in Version 5.x. The most significant difference is that file names are no longer restricted to the old limit of eight characters. You can now use a longer and more descriptive name, as illustrated in the following examples:

C-TNL Week 10 play ball

F-SFS 7-24-12 lineups

F-Squirrels Week 6 results

Using LPFET

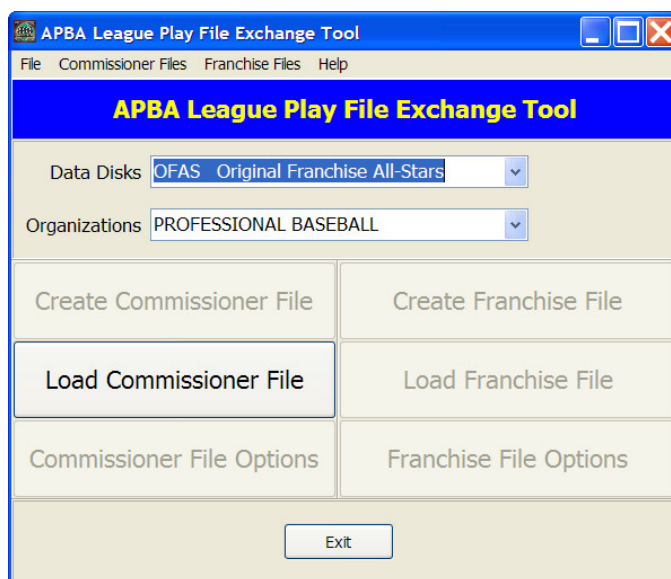
All screen images in this section show the LPFET running on a Windows XP computer with APBA Baseball Version 5.5 already installed.

Example 1: Load a new league into 5.x using a 5.75 C-file

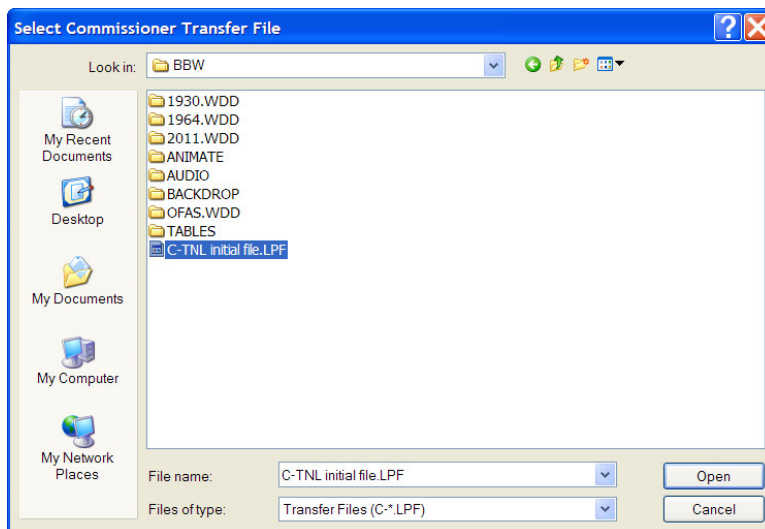
You have an initial Commissioner file for a league in Version 5.75 format, and you need to load it into Version 5.x.

1. Open the LPFET and click the “Load Commissioner File” button.

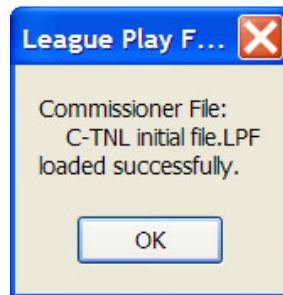
Note that no other buttons are active, because a valid league Data Disk has not been selected in the Data Disks and Organizations fields.



2. In the “Select Commissioner Transfer File” window, browse to the C-file that you wish to load, click on the filename, and click the “Open” button.



3. The conversion and loading of the C-file should only take a few seconds. You will receive a confirmation popup window when the C-file has been loaded. Click the “OK” button to close the confirmation window.



Example 2: Create a 5.75 F-file to send to the Commissioner

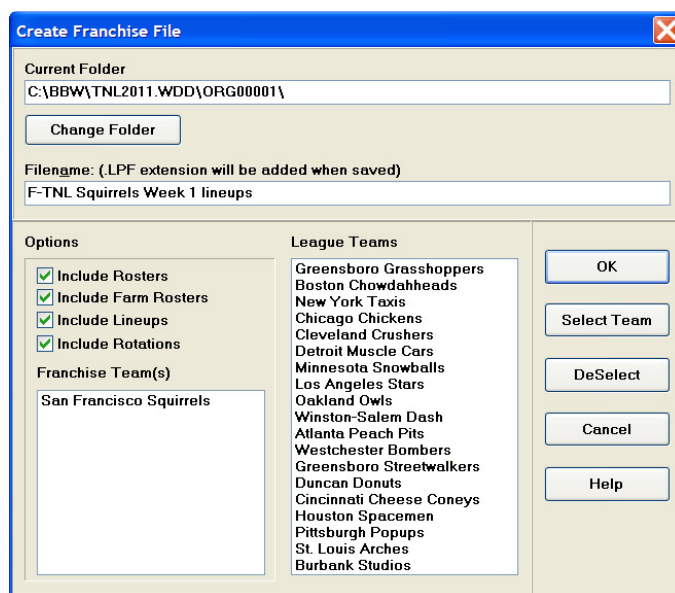
You are using Version 5.x in your league, and you need to send a Franchise file to the Commissioner, who is using Version 5.75.

1. Open the LPFET and select the Data Disk for the appropriate league and the Organization in that league, using the drop-down menus.



2. Once the selections have been made, click the “Create Franchise File” button.

3. In the Create Franchise File screen, choose the destination folder for the F-file, type in the file's name, and make sure that you have checked the boxes for all desired options and have selected the correct Franchise Teams(s).

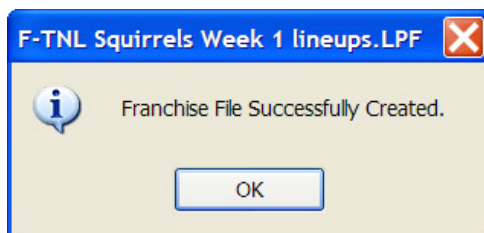


In most leagues, you will want to include Rosters, Lineups, and Rotations. If there is a Farm Organization in the league, you will also want to include Farm Rosters.

If you are managing more than one Franchise Team, you can select all of your teams, add them to the Franchise Team(s) list, and create a single Franchise file. You do not have to create separate F-files for each team.

After all information has been entered, click the “OK” button.

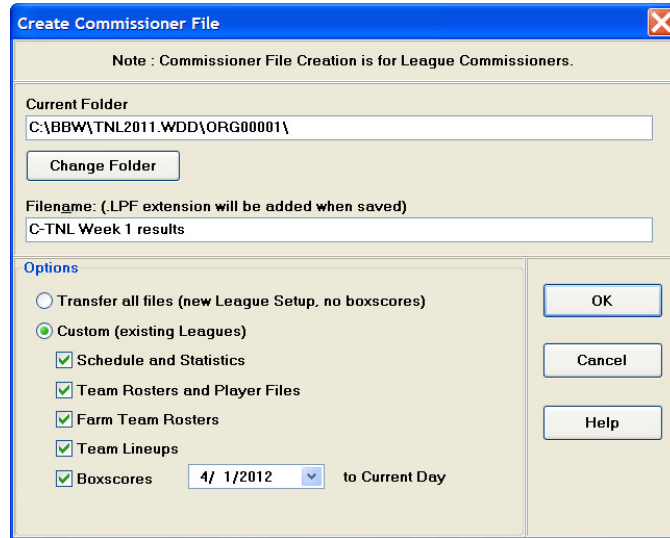
4. A confirmation will appear when the F-file has been created and saved in the specified folder.



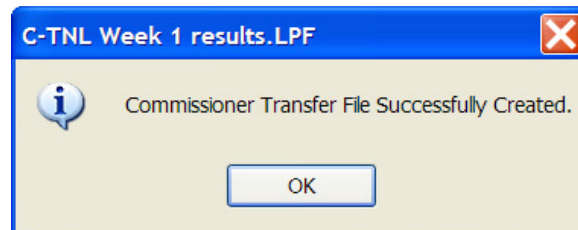
Example 3: Commissioner has Version 5.x, managers use 5.x or 5.75

In this case, the Commissioner and any other managers who are using Version 5.x will use the LPFET.

1. The Commissioner creates a C-file by clicking the “Create Commissioner File” button and selecting the folder, entering the file name, and selecting options.



A confirmation window appears when the C-file has been created.



The Commissioner then sends this C-file to all managers.

2. 5.75 users load the C-file directly into League Manager.
5.x users load the C-file using the “Load Commissioner File” option in LPFET, as described in Example 1.
3. 5.75 users create F-files directly in League Manager.
5.x users create F-files using the “Create Franchise File” option in LPFET, as described in Example 2.
4. The Commissioner loads the F-files, which are all in Version 5.75 format, by using the “Load Franchise File” option in LPFET.