

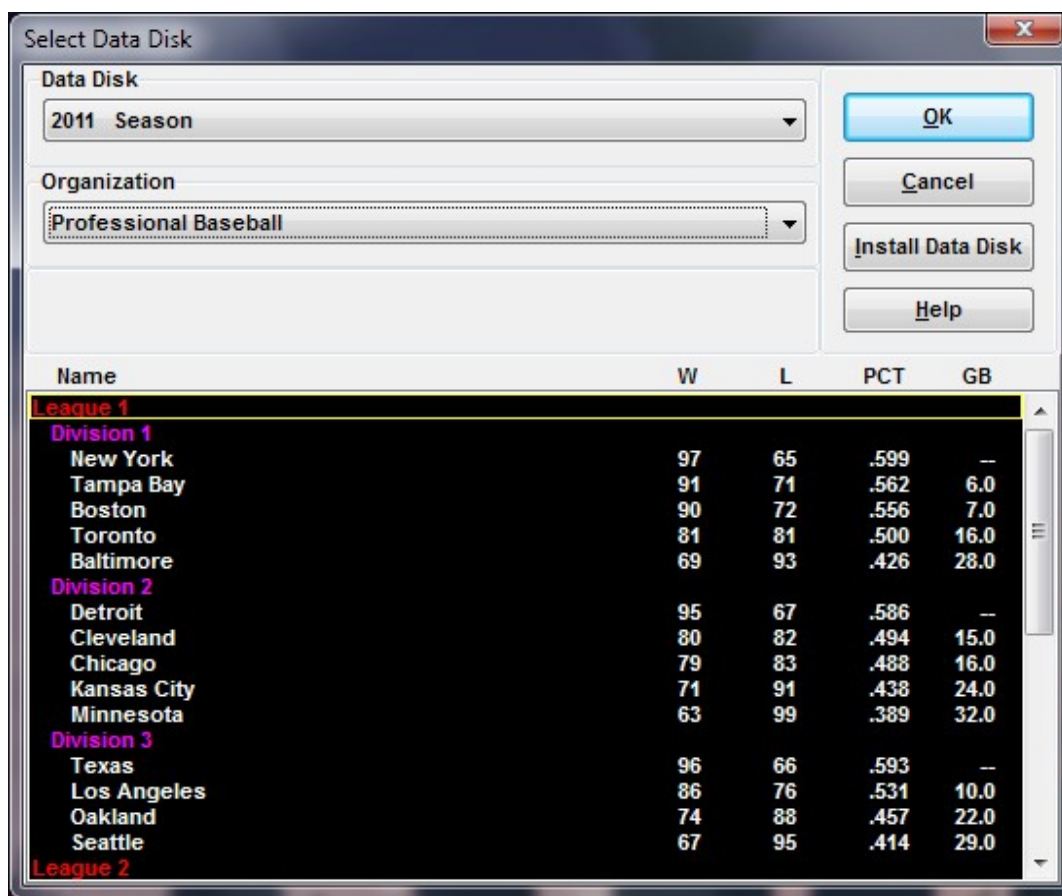
Quick Start Guide

This guide will walk you through the basic steps to get a season replay underway.

We'll use the 2011 season disk that was included during the install but you can use any season disk that you have installed.

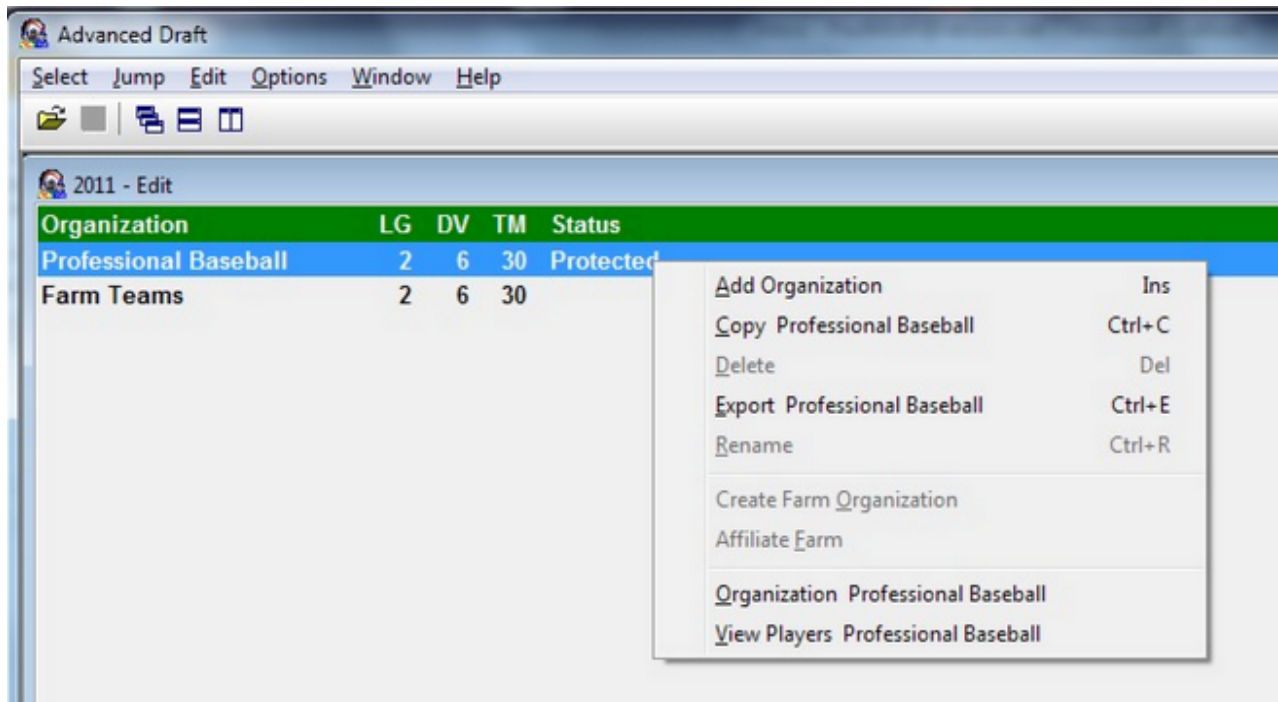
All 4 of the programs, Advanced Draft, League Manager, APBA Baseball, and Statmaster will be used during this exercise.

The first step is to select the 2011 season for your replay. Open Advanced Draft and click on the small manila folder icon in the upper left or click "Select" then "Load Data Disk" from the main menu. This dialog will open up:

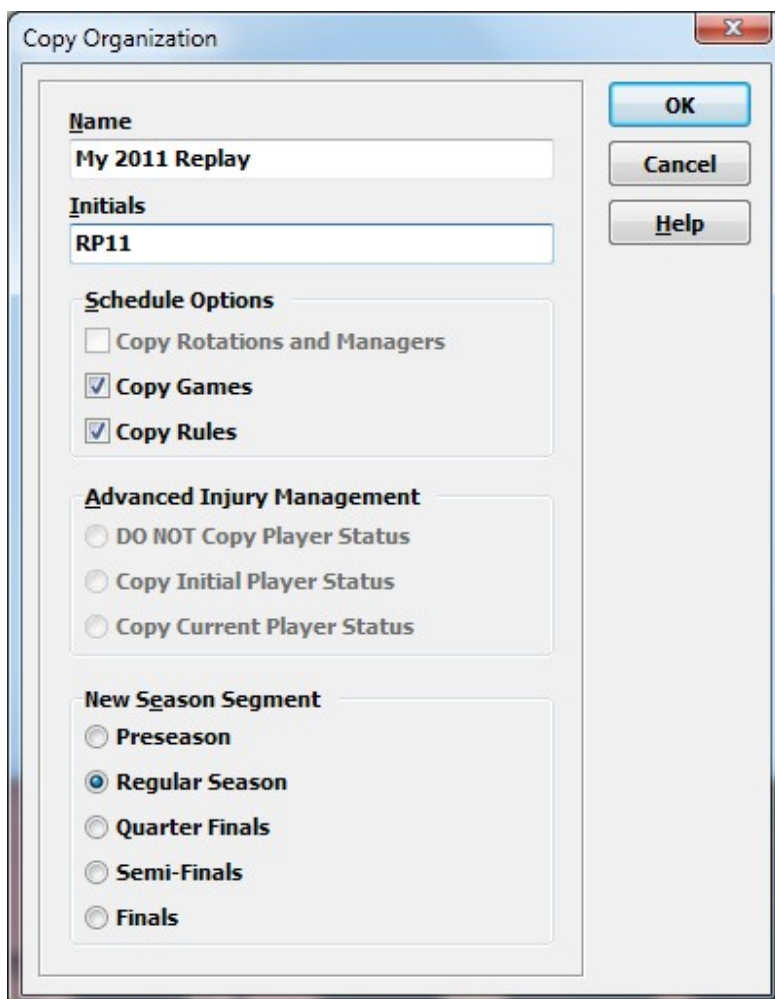


Select the "2011 Season" in the Data Disk box (click on the down pointing arrow to see a list of installed disks) and "Professional Baseball" in the Organization box.

Click on the "OK" button.



The disk edit window opens. Right-click on "Professional Baseball" and then click on "Copy Professional Baseball" from the menu that opens up.



The Copy Organization dialog now opens. Enter a new name for it and enter Initials for your replay. Initials can be up to a maximum of 4 characters long.

Keep everything else as is and click on the "OK" button.

Now double-click on your newly copied organization name to see it.

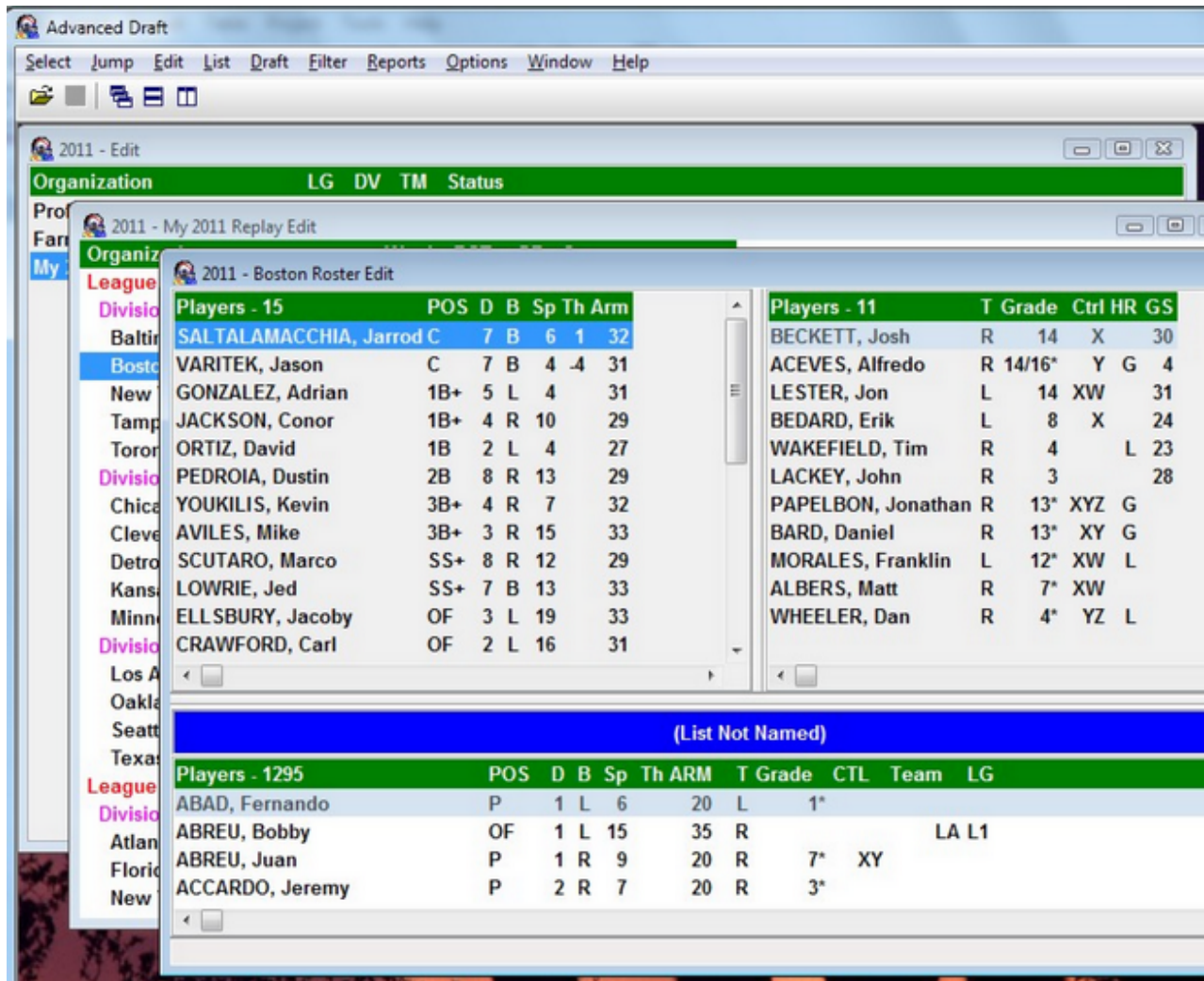
The screenshot shows the 'Advanced Draft' software interface. The main window is titled '2011 - Edit' and contains a table with the following data:

Organization	LG	DV	TM	Status
Professional Baseball	2	6	30	Protected
Farm Teams	2	6	30	
My 2011 Replay	2	6	30	Changed

A sub-window titled '2011 - My 2011 Replay Edit' is open, displaying a detailed table of teams and their statistics:

Organization	W	L	PCT	GB	Status
League 1					
Division 1					
Baltimore	0	0	.000	--	Changed
Boston	0	0	.000	--	Changed
New York	0	0	.000	--	Changed
Tampa Bay	0	0	.000	--	Changed
Toronto	0	0	.000	--	Changed
Division 2					
Chicago	0	0	.000	--	Changed
Cleveland	0	0	.000	--	Changed
Detroit	0	0	.000	--	Changed
Kansas City	0	0	.000	--	Changed
Minnesota	0	0	.000	--	Changed
Division 3					
Los Angeles	0	0	.000	--	Changed
Oakland	0	0	.000	--	Changed
Seattle	0	0	.000	--	Changed
Texas	0	0	.000	--	Changed
League 2					
Division 1					
Atlanta	0	0	.000	--	Changed
Florida	0	0	.000	--	Changed
New York	0	0	.000	--	Changed

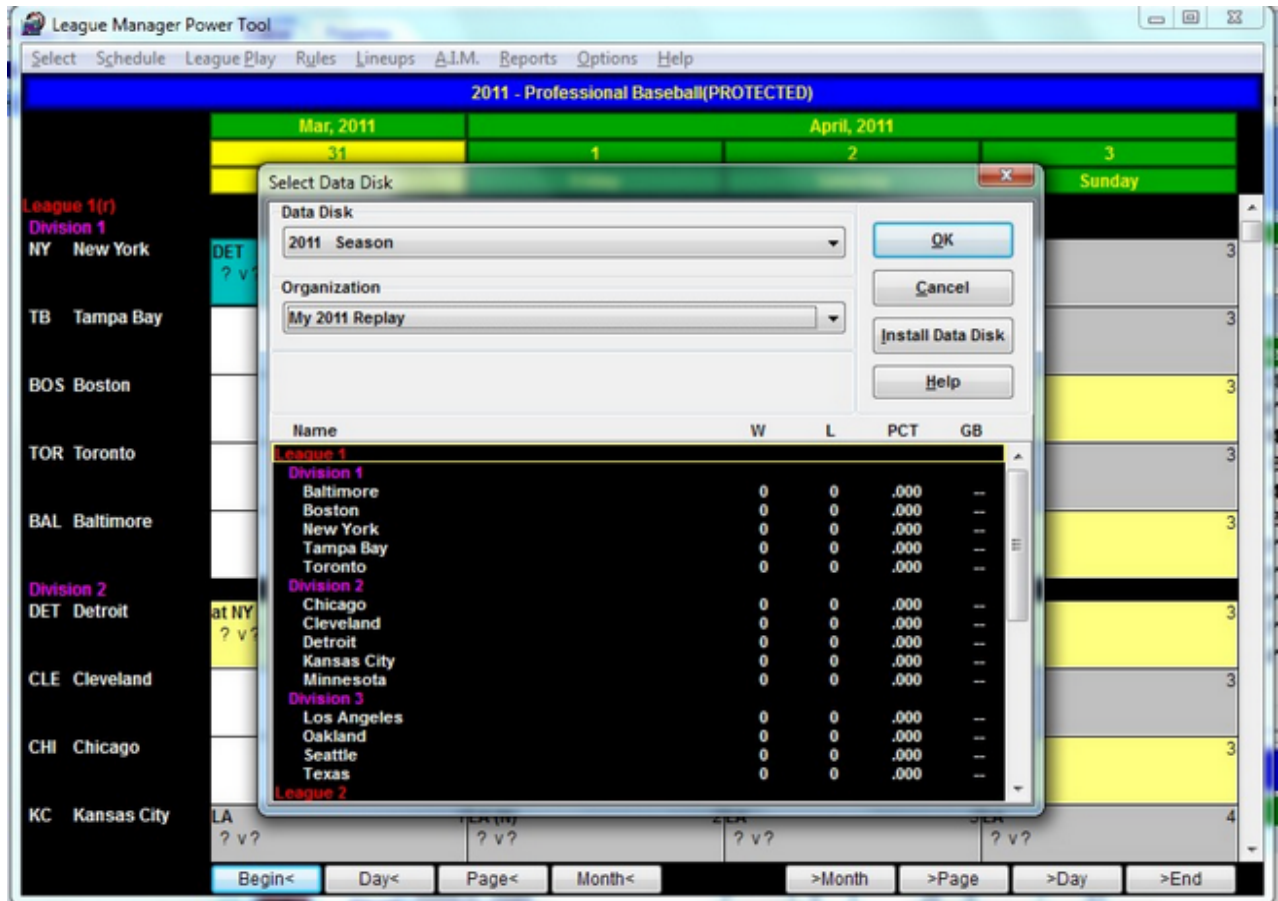
Then double-click on a team to see its roster.



For this quick start guide we won't be doing anything else in Advanced Draft. You can reopen it later and explore all the possibilities it offers.

So close out of Advanced Draft. Click "Yes" when it asks if you want to save changes.

Now open League Manager from the Start Menu or the desktop icon if you created one during the installation.

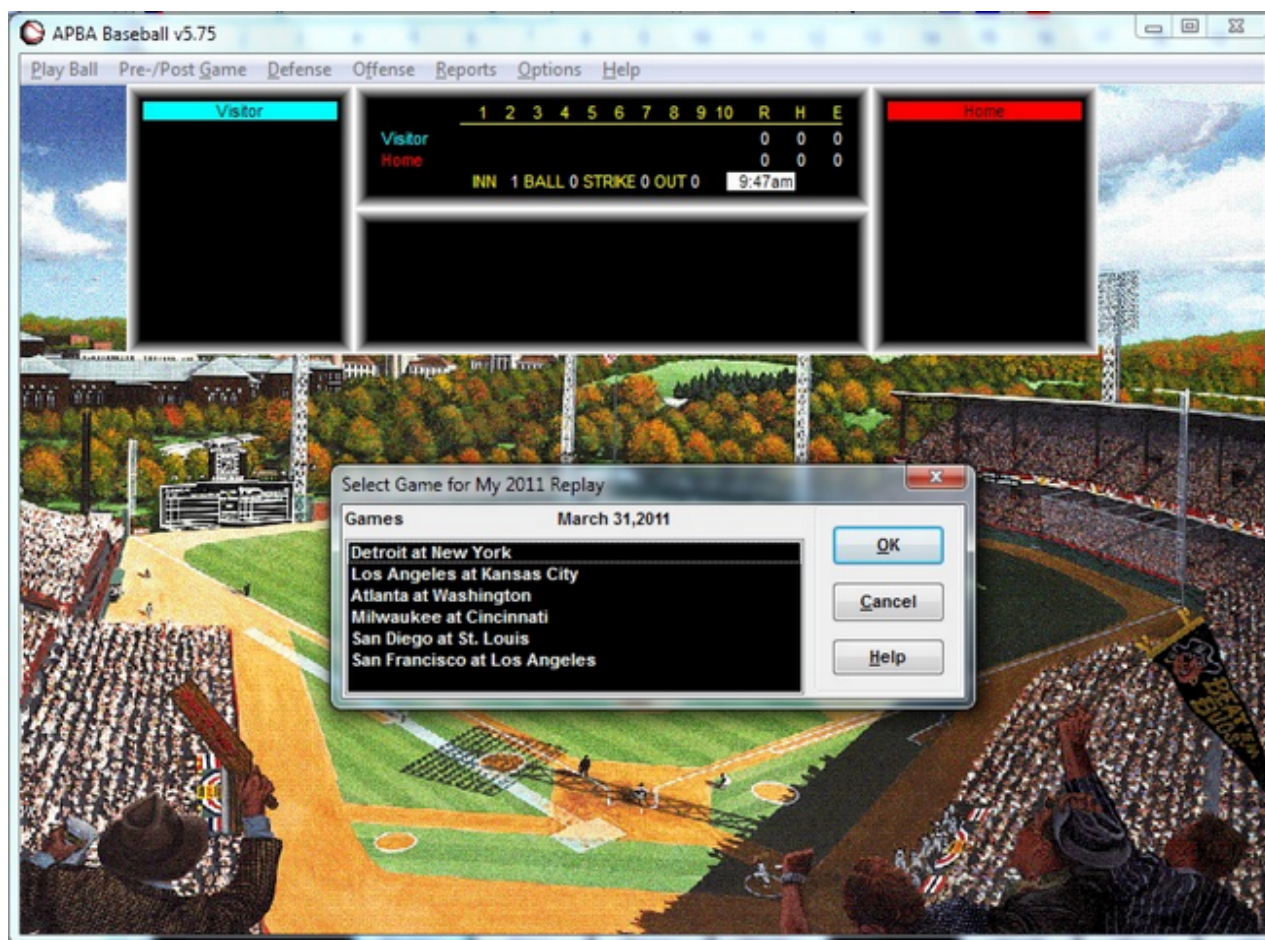


At the top of the window you will see that "2011 - Professional Baseball(PROTECTED)" is selected. We need to change that as you can't save statistics for a "Protected" organization.

Click on the "Select" menu item and then "Load Organization" to open the Select Data Disk dialog as shown above. Change the Organization to "My 2011 Replay" then click on the "OK" button.

You can do many things in League Manager - assign automated Micromanagers to teams, assign ballparks, set rules, and lots more. Come back later to explore the many options but, for now, click on "Select" from the main menu and then "Play Manual Game".

Just like that, League Manager minimized to the taskbar and APBA Baseball opened up.



Select a game to play from the list of available games and then click on the "OK" button. Atlanta at Washington was selected for this guide.

This will open the Lineup Edit window.

Select Starting Lineup for Atlanta

Lineup Edit Fatigue Reports Help

	Primary	Pos	B	Def	Inf
1.	BOURN, Michael	CF	L	3	
2.	PRADO, Martin	LF	R	2	
3.	JONES, Chipper	3B	B	4	4
4.	McCANN, Brian	C	L	7	7
5.	UGGLA, Dan	2B	R	7	7
6.	FREEMAN, Freddie	1B	L	4	4
7.	GONZALEZ, Alex	SS	R	9	9
8.	HEYWARD, Jason	RF	L	2	
9.	LOWE, Derek	P	R	2	2
Totals				40	33

Manager Mode
☒ Manual ☐ Auto

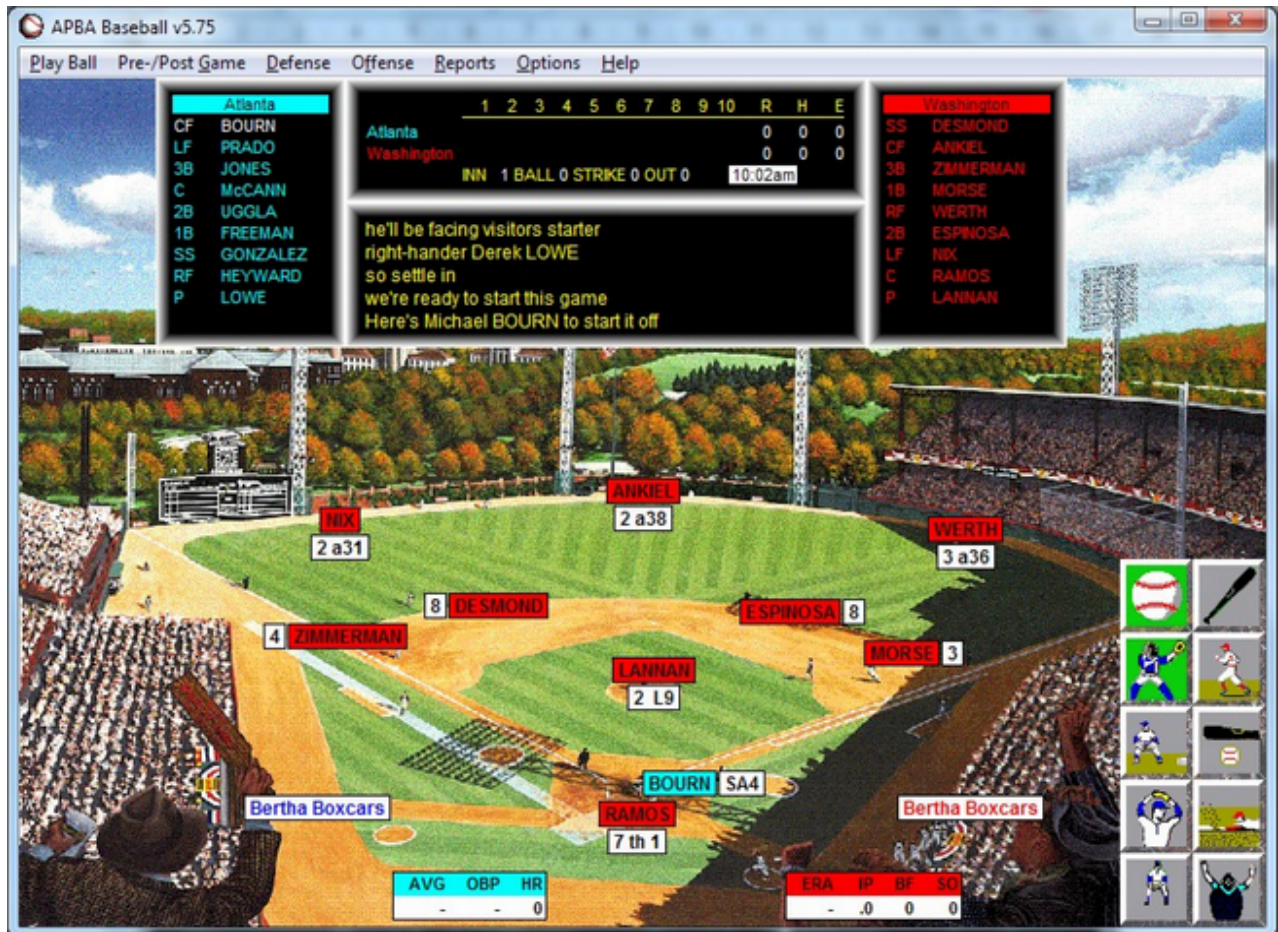
Manager
 Chandler, Diomedes [CHAIN]

OK Cancel New Who

Players - 15					Pitchers - 11				
	Pos	D	B	Sp		T	Gr	Ctrl	
ROSS	C	8	R	4	HEYWARD	OF	2	L 16	
McCANN	C	7	L	4	McLOUTH	OF	2	L 17	
FREEMAN	1B	4	L	6	PRADO	OF+	2	R 14	
WILSON	2B+	8	R	9	DIAZ	OF	1	R 7	
UGGLA	2B	7	R	8	HINSKE	OF+	1	L 5	
CONRAD	2B+	6	B	14					
JONES	3B	4	B	7					
GONZALEZ	SS	9	R	8					
BOURN	OF	3	L	18					
CONSTANZA	OF	2	L	19					
					JURRJENS	R	13		
					HUDSON	R	12	YZ	
					HANSON	R	10	XY	
					BEACHY	R	9	XY	
					LOWE	R	3		
					O'FLAHERTY	L	24*	XZ	
					VENTERS	L	22*	XYW	
					KIMBREL	R	20*	XYW	
					SHERRILL	L	13*	XY	

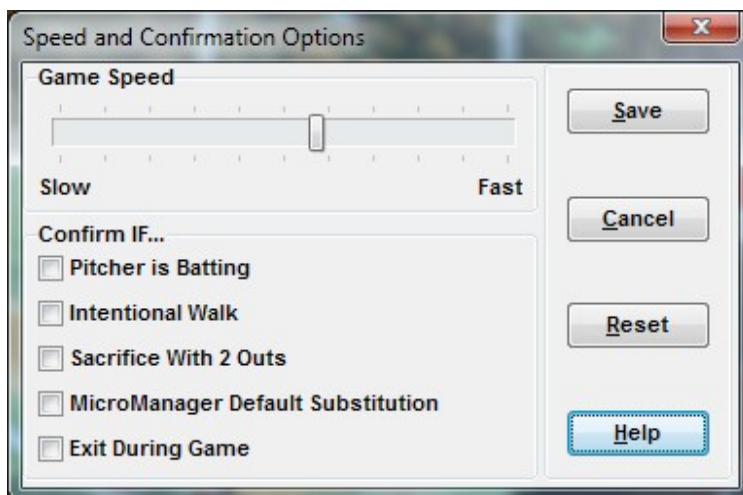
When this window opens up you won't see the players in the lineup. Double-click on "Primary Lowe(R)" in the lineup list box and the lineup will load as above. "Primary" is the name of the lineup and "Lowe" is Derek Lowe, the pitcher in the lineup. The "(R)" indicates that Lowe is a right-handed pitcher. You can make changes to the lineup here but for now we'll move on. Click on the "OK" button.

The Washington Lineup Edit window will open up. Double-click on "Primary Lannan(L)" to load the Washington lineup and then click on the "OK" button.



And the game is ready to play!

There are several options that you can set under the "Options" menu. One that you may want to set now controls the speed of play. Click on the "Options" menu and then "Speed and Confirmation Options".

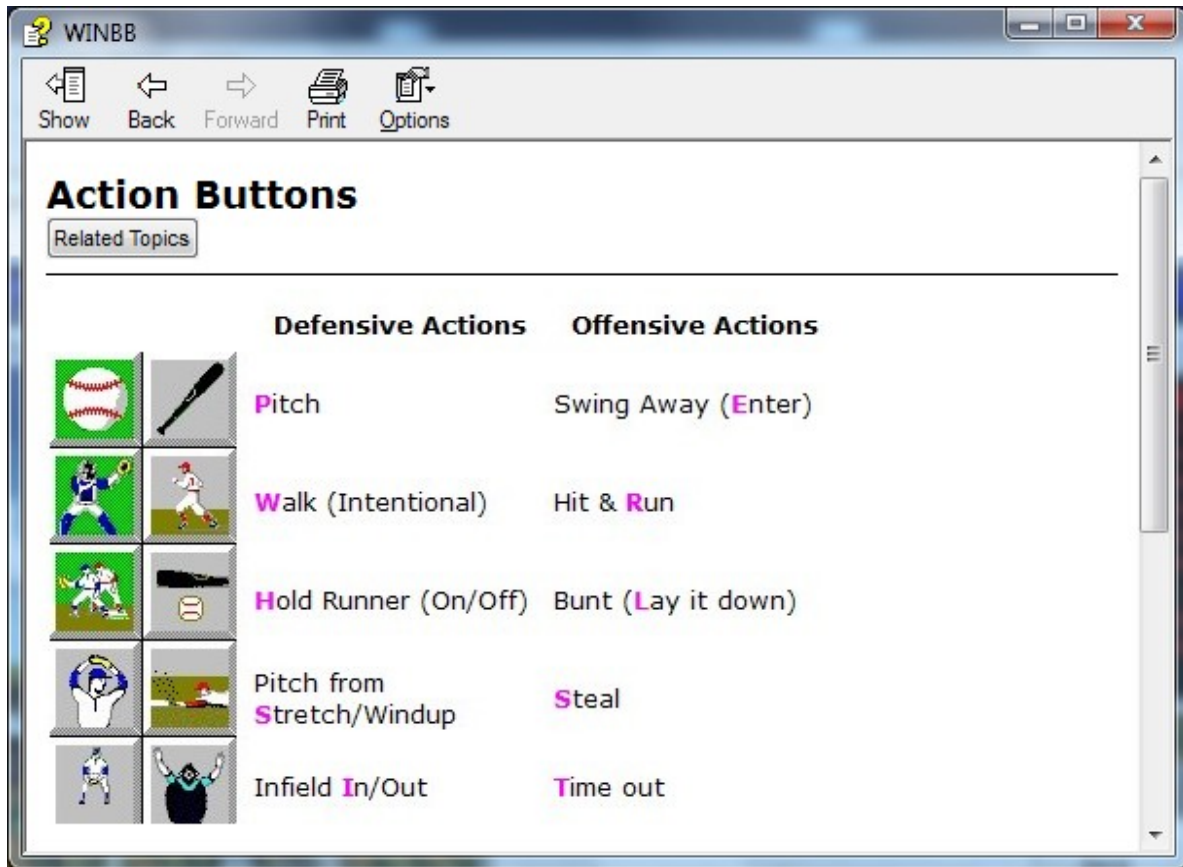


Set the Game Speed slider to the 1/2 way mark. You can always come back and reset it if the game plays too slow or too fast.

Explore the other options. Click on the "Help" button for explanations of what the various options do.

Now, back to the game ...

The "Decision Panel" is in the lower right corner. This controls the action for the game. The snapshot below explains what the buttons do. The Defensive Action buttons are on the left, the Offensive on the right.

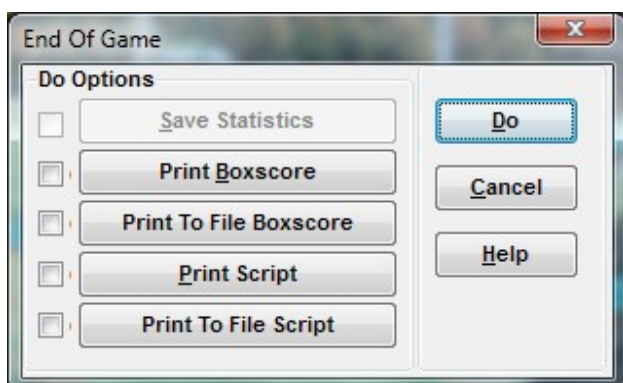


You can find the full description in the Help file by opening Help and then selecting the "Action Buttons" topic under the "Contents" book.

The letters colored in fuchsia are keyboard shortcuts. You can use the letter "M" for both Pitch and Swing Away.

So go ahead and play the game! While playing the game, explore the different menu items available to you. Check the Help file for answers to your questions. The "How Do I ..." topic under Contents will be very helpful during the play of a game.

When the game is over, this box will pop up:

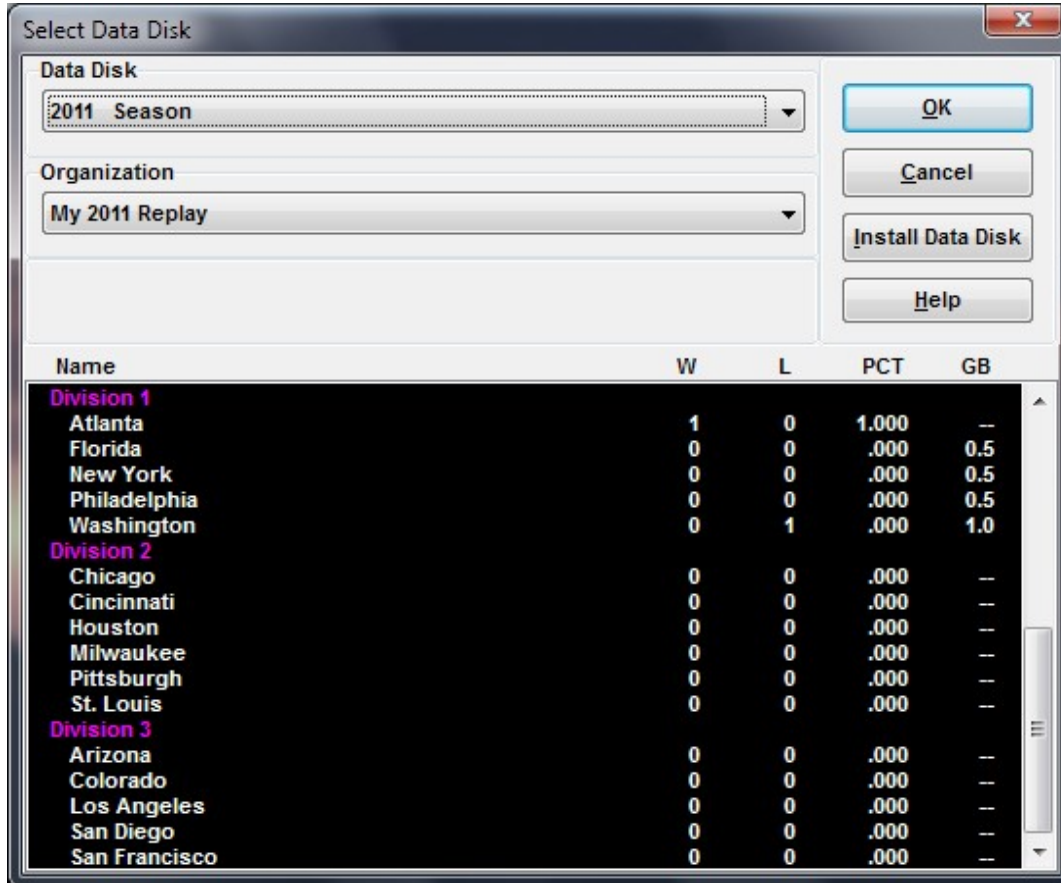


Click on "Do" and the game stats will be saved.

Now click on the "Play Ball" menu item and then "Exit" to close APBA Baseball.

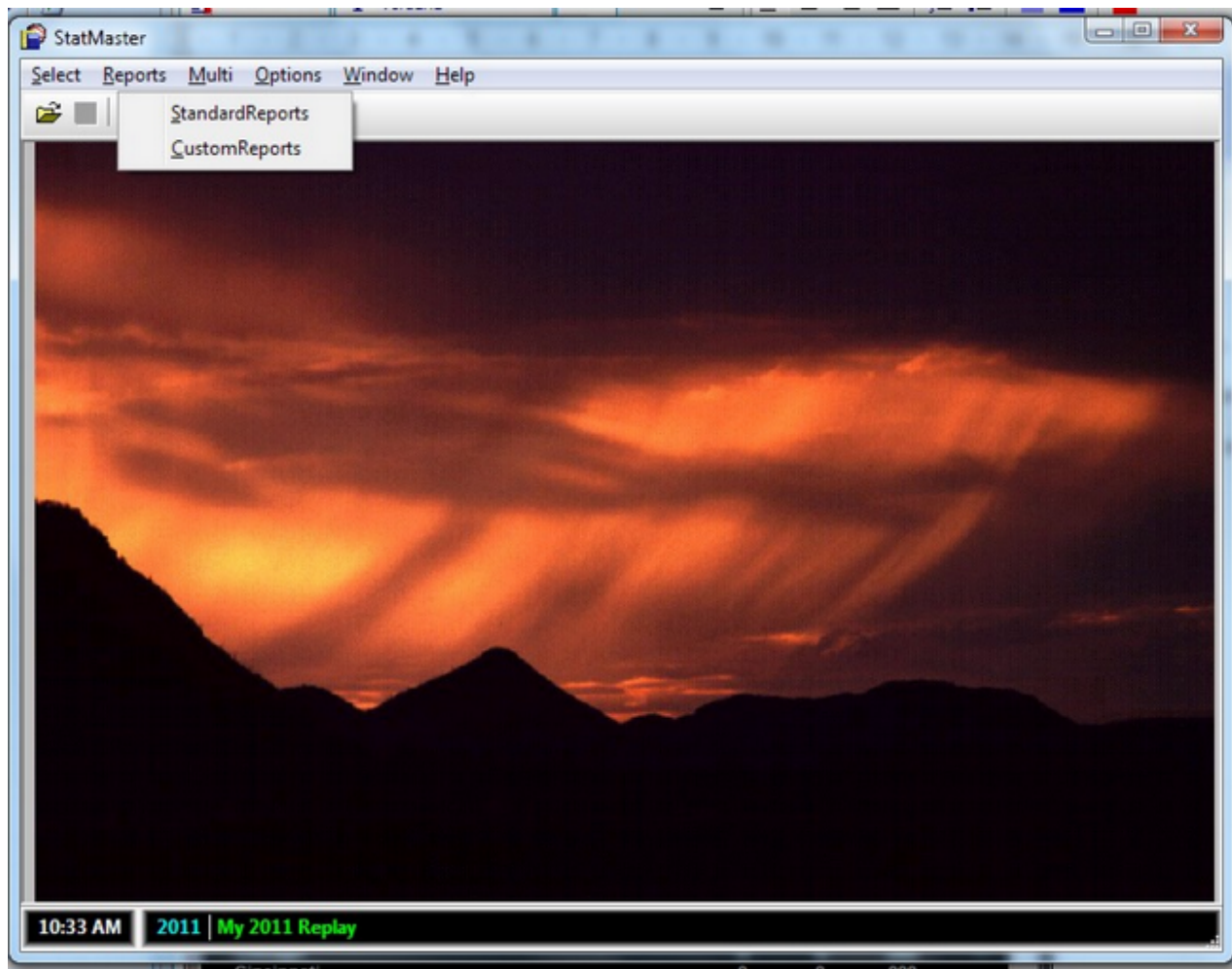
Open up StatMaster from the Start Menu or the desktop icon if you created one during installation.

Click on the small manila folder icon in the upper left or click "Select" then "Open" from the main menu. This dialog will open up:

A screenshot of a "Select Data Disk" dialog box. The dialog has a title bar with a close button. Inside, there are two dropdown menus: "Data Disk" with "2011 Season" selected, and "Organization" with "My 2011 Replay" selected. To the right of these are four buttons: "OK", "Cancel", "Install Data Disk", and "Help". Below the dropdowns is a table with columns "Name", "W", "L", "PCT", and "GB". The table lists teams grouped by division. Division 1 includes Atlanta, Florida, New York, Philadelphia, and Washington. Division 2 includes Chicago, Cincinnati, Houston, Milwaukee, Pittsburgh, and St. Louis. Division 3 includes Arizona, Colorado, Los Angeles, San Diego, and San Francisco. The "W", "L", "PCT", and "GB" columns contain numerical values for each team.

Name	W	L	PCT	GB
Division 1				
Atlanta	1	0	1.000	—
Florida	0	0	.000	0.5
New York	0	0	.000	0.5
Philadelphia	0	0	.000	0.5
Washington	0	1	.000	1.0
Division 2				
Chicago	0	0	.000	—
Cincinnati	0	0	.000	—
Houston	0	0	.000	—
Milwaukee	0	0	.000	—
Pittsburgh	0	0	.000	—
St. Louis	0	0	.000	—
Division 3				
Arizona	0	0	.000	—
Colorado	0	0	.000	—
Los Angeles	0	0	.000	—
San Diego	0	0	.000	—
San Francisco	0	0	.000	—

Click on the "OK" button.



A submenu listing "Standard Reports" and "Custom Reports" will open up. Select "Standard Reports".



The dialog box is titled "Report Selection" and contains a section for "My 2011 Replay". It is divided into three main columns. The left column contains three sub-sections: "Summary" with four items (Standings, Team vs Team, Summary, Game Summaries), "Club" with four items (Scoring, Batting, Pitching, Fielding), and "Leaders In Player" with six items (Batting, Pitching, Relief Pitching, Fielding, Streaks). The middle column is titled "Player" and contains two sub-sections: "Batting" with four items (Batting, Part 1, Batting, Part 2, Pitching, Relief Pitching) and "Fielding At..." with eight items (Pitcher, Catcher, First Base, Second Base, Third Base, Shortstop, Left Field, Center Field, Right Field). The right column contains four buttons: "Display", "Print", "Cancel", and "Help".

Summary	Player	Buttons
<input checked="" type="checkbox"/> Standings	<input checked="" type="checkbox"/> Batting, Part 1	<input type="button" value="Display"/>
<input type="checkbox"/> Team vs Team	<input type="checkbox"/> Batting, Part 2	<input type="button" value="Print"/>
<input type="checkbox"/> Summary	<input type="checkbox"/> Pitching	<input type="button" value="Cancel"/>
<input type="checkbox"/> Game Summaries	<input type="checkbox"/> Relief Pitching	<input type="button" value="Help"/>
Club	Fielding At...	
<input type="checkbox"/> Scoring	<input type="checkbox"/> Pitcher	
<input type="checkbox"/> Batting	<input type="checkbox"/> Catcher	
<input type="checkbox"/> Pitching	<input type="checkbox"/> First Base	
<input type="checkbox"/> Fielding	<input type="checkbox"/> Second Base	
Leaders In Player	<input type="checkbox"/> Third Base	
<input checked="" type="checkbox"/> Batting	<input type="checkbox"/> Shortstop	
<input type="checkbox"/> Pitching	<input type="checkbox"/> Left Field	
<input type="checkbox"/> Relief Pitching	<input type="checkbox"/> Center Field	
<input type="checkbox"/> Fielding	<input type="checkbox"/> Right Field	
<input type="checkbox"/> Streaks		

This dialog will open. Select a few reports to display and then click on the "Display" button.

StatMaster																			
Select Reports Multi Options Window Help																			
2011 - My 2011 Replay - Player Batting																			
31 Players	Tm	Lg	AVG	G	AB	R	H	2B	3B	HR	TB	RBI	SO	BB	ASB	SB	CS	SBP	GDP
ANKIEL, R.	WAS	L2	.500	1	4	0	2	0	0	0	2	1	1	0	0	0	0	-	0
BERNADINA, R.	WAS	L2	1.000	1	1	1	1	0	0	1	4	1	0	0	0	0	0	-	0
BIXLER, B.	WAS	L2	.000	1	1	1	0	0	0	0	0	0	0	0	0	0	0	-	0
BOURN, M.	ATL	L2	.000	1	4	0	0	0	0	0	0	0	2	1	0	0	0	-	0
CONSTANZA, J.	ATL	L2	1.000	1	1	1	1	0	0	0	1	1	0	0	0	0	0	-	0
DESMOND, I.	WAS	L2	.250	1	4	0	1	0	0	0	1	0	2	0	0	0	0	-	0
2011 - My 2011 Replay - Batting Leaders																			
The 14 players with the highest Batting Average										The 14 players with the highest Slugging Average									
Name	Tm	Lg	AVG	PA	Name	Tm	Lg	SLG		Name	Tm	Lg	SLG		Name	Tm	Lg	SLG	
McCANN, B.	ATL	L2	.750	4	UGGLA, D.	ATL	L2	1.000		ESPINOSA, D.	WAS	L2	1.000						
HEYWARD, J.	ATL	L2	.667	4															
2011 - My 2011 Replay - Standings on Mar. 31, 2011																			
	W	L	PCT	GB	STRK	Last 10	Home	Away	1 Run	X-Inn	L1 D1	L1 D2	L1 D3						
League 1																			
Division 1																			
Baltimore	0	0	.000	-	-	0-0	0-0	0-0	0-0	0-0	0-0	0-0	0-0						
Boston	0	0	.000	-	-	0-0	0-0	0-0	0-0	0-0	0-0	0-0	0-0						
New York	0	0	.000	-	-	0-0	0-0	0-0	0-0	0-0	0-0	0-0	0-0						
Tampa Bay	0	0	.000	-	-	0-0	0-0	0-0	0-0	0-0	0-0	0-0	0-0						
10:37 AM 2011 My 2011 Replay																			

And there you go! You've now setup an organization for replay, played a game, and saved the stats.

Close StatMaster. Go back and open League Manager and find the game that was just played.

League Manager Power Tool					
Select Schedule League Play Rules Lineups A.I.M. Reports Options Help					
2011 - My 2011 Replay					
Mar, 2011		April, 2011			
31		1	2	3	
Thursday		Friday	Saturday	Sunday	
OAK Oakland		SEA (N) ? v ?	1 SEA (N) ? v ?	2 SEA ? v ?	3
SEA Seattle		at OAK (N) ? v ?	1 at OAK (N) ? v ?	2 at OAK ? v ?	3
TEX Texas		BOS ? v ?	1 BOS (N) ? v ?	2 BOS ? v ?	3
League 2(r)					
Division 1					
ATL Atlanta	1(b,s)		at WAS ? v ?	2 at WAS ? v ?	3
FLO Florida	ATL 7 F WAS 4	NY (N) ? v ?	1 NY (N) ? v ?	2 NY ? v ?	3
NY New York		at FLO (N) ? v ?	1 at FLO (N) ? v ?	2 at FLO ? v ?	3
PHI Philadelphia		HOU ? v ?	1 HOU (N) ? v ?	2 HOU ? v ?	3
WAS Washington	1(b,s)		ATL ? v ?	2 ATL ? v ?	3
Division 2					
CHI Chicago		PIT ? v ?	1 PIT ? v ?	2 PIT ? v ?	3
Begin<		Day<	Page<	Month<	>Month
					>Page
					>Day
					>End

Double-click on the box with the final score and the boxscore will open up.

Atlanta at Washington

Team	1	2	3	4	5	6	7	8	9	R	H	E
Atlanta	0	0	0	3	0	1	0	3	0	7	11	1
Washington	0	0	1	1	0	1	1	0	0	4	7	0

ATLANTA	AB	R	H	RBI	BB	SO	LOB	AVG
M. BOURN, cf	4	0	0	0	1	2	3	.000
M. PRADO, lf	5	0	1	0	0	1	2	.200
C. JONES, 3b	4	0	0	0	1	0	1	.000
B. McCANN, c	4	1	3	0	0	0	0	.750
N. McLOUTH, pr	0	1	0	0	0	0	0	-
J. WILSON, ss	1	0	0	0	0	0	0	.000
D. UGGLA, 2b	5	2	2	1	0	1	3	.400
F. FREEMAN, 1b	3	1	0	0	1	0	2	.000
A. GONZALEZ, ss	3	0	0	0	0	2	2	.000
J. CONSTANZA, ph	1	1	1	1	0	0	0	1.000
E. O'FLAHERTY, p	0	0	0	0	0	0	0	-
J. HEYWARD, rf	3	1	2	2	1	0	0	.667
D. LOWE, p	3	0	1	3	0	1	1	.333
G. SHERRILL, p	0	0	0	0	0	0	0	-
D. ROSS, ph-c	1	0	1	0	0	0	0	1.000
Totals	37	7	11	7	4	7		

Batting:

2B: J. HEYWARD (1), D. LOWE (1)

HR: D. UGGLA (1)

RBI: D. UGGLA (1), J. CONSTANZA (1), J. HEYWARD 2(2), D. LOWE 3(3)

Team LOB: 7

Fielding:

E: J. HEYWARD

DP: 2

WASHINGTON	AB	R	H	RBI	BB	SO	LOB	AVG
I. DESMOND, ss	4	0	1	0	0	2	1	.250
R. ANKIEL, cf	4	0	2	1	0	1	1	.500
R. ZIMMERMAN, 3b	4	0	0	0	0	1	1	.000
M. MORSE, 1b	1	0	0	0	0	1	0	.000
B. BIXLER, pr-1b	1	1	0	0	0	0	0	.000
J. GOMES, ph-lf	0	0	0	0	1	0	0	-
J. WERTH, rf	4	0	0	0	0	2	2	.000
D. ESPINOSA, 2b	4	1	1	1	0	0	1	.250
L. NIX, lf-1b	4	0	2	1	0	1	0	.500
W. RAMOS, c	3	1	0	0	1	1	2	.000
J. LANNAN, p	1	0	0	0	1	0	1	.000
R. MATTHEUS, p	0	0	0	0	0	0	0	-
R. BERNADINA, ph	1	1	1	1	0	0	0	1.000
A. La ROCHE, p	0	0	0	0	0	0	0	-
D. STOREN, p	0	0	0	0	0	0	0	-
I. RODRIGUEZ, ph	1	0	0	0	0	1	0	.000
Totals	32	4	7	4	3	10		

Batting:

2B: L. NIX 2(2)

HR: D. ESPINOSA (1), R. BERNADINA (1)

RBI: R. ANKIEL (1), D. ESPINOSA (1), L. NIX (1), R. BERNADINA (1)

HBP: M. MORSE (1)

GDP: R. ZIMMERMAN (1)

Team LOB: 5

INJURIES : M. MORSE (2 days)

Pitching

ATLANTA (GAME 1)	TG	SC	IP	H	R	ER	BB	SO	BF	IR	ERA
D. LOWE	R	51	6.0	7	4	3	2	9	27	0	4.50
G. SHERRILL, W, 1-0	L		1.0	0	0	0	0	0	3	0	.00
E. O'FLAHERTY, SOP S, 1	L		2.0	0	0	0	1	1	6	0	.00
Totals			9.0	7	4	3	3	10	36	0	

WASHINGTON (GAME 1)	TG	SC	IP	H	R	ER	BB	SO	BF	IR	ERA
J. LANNAN	L	39	5.0	6	4	4	3	3	23	0	7.20
R. MATTHEUS	R		2.0	1	0	0	0	2	7	0	.00
A. La ROCHE, L, 0-1	L		.1	2	3	3	1	0	4	0	81.00
D. STOREN	R		1.2	2	0	0	0	2	7	2	.00
Totals			9.0	11	7	7	4	7	41	2	

HB: D. LOWE

HR: D. LOWE 2(2), J. LANNAN (1)

GAME DATA

Day Game played on Thursday, March 31, 2011

Regulation Game, Time: 26:34m

The above is the "Newspaper" style boxscore. You can also get the full boxscore with many more details.

This concludes this Quick Start Guide. There is much more awaiting you in APBA Baseball so go ahead and start exploring! Consult the help files for answers to your questions and explanations for all the functions that are available.